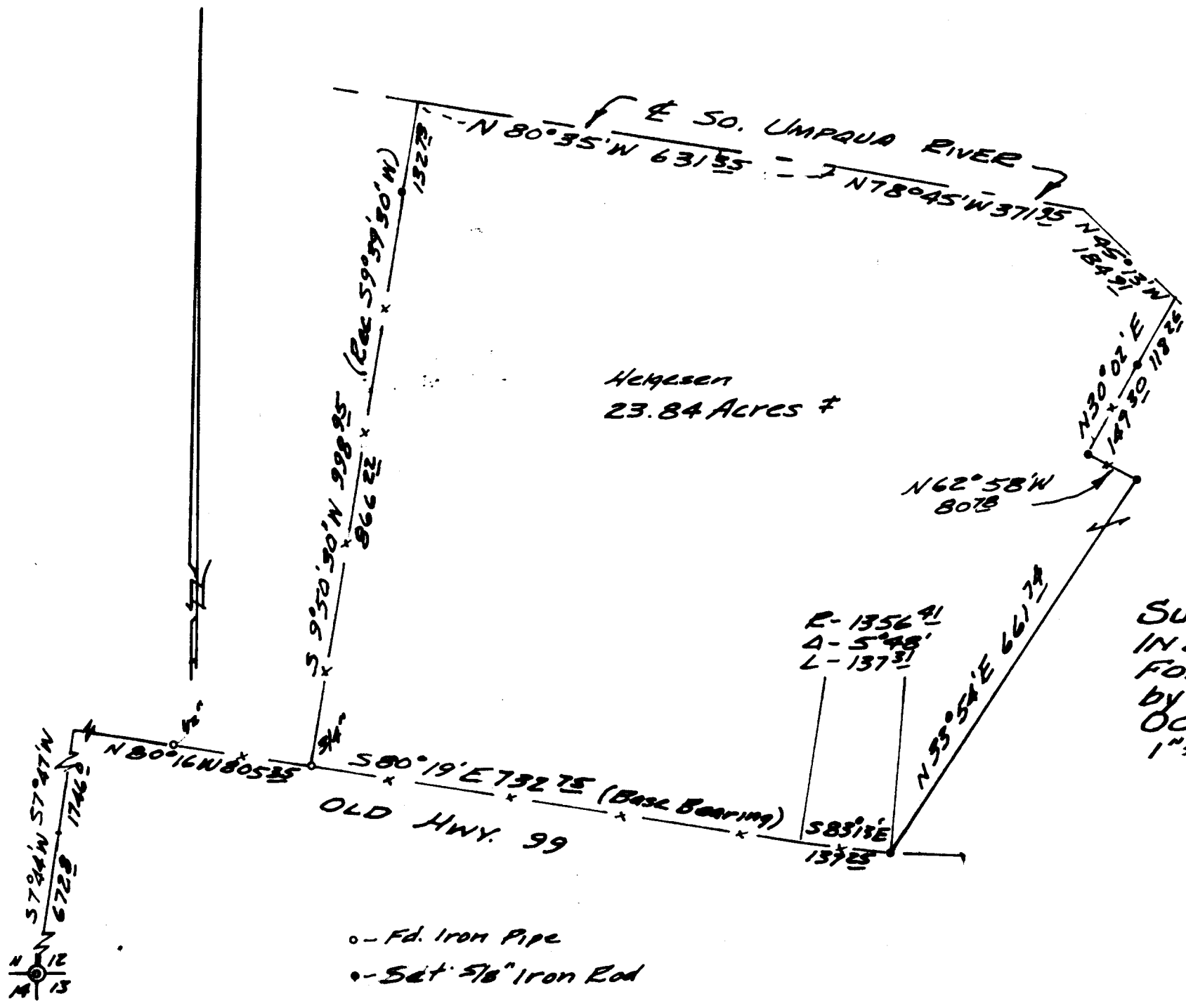


FILED
RECEIVED

OCT 15 1970

COUNTY SURVEYOR
DOUGLAS COUNTY, ORE.



COUNTY SURVEYORS FILE DATA
DO NOT REMOVE FROM OFFICE

SURVEY FOR DEED DESCRIPTION
IN SEC. 12, T. 29S., R. 6W. W.M.
FOR BLACK & TIPTON REALTY
by BRUCE ROGERS
OCT, 1970
1" = 200'

REGISTERED
OREGON
LAND SURVEYOR

Bruce R. Rogers

JUL 21 1970
BRUCE R. ROGERS
660

- o - Fd. Iron Pipe
- o - Set 5/8" Iron Rod