

COUNTY SURVEYORS FILE DATA  
DO NOT REMOVE FROM OFFICE

FILED  
RECEIVED

OCT 9 1970

# U.S. PLYWOOD CUTTING LINES

COUNTY SURVEYOR  
DOUGLAS COUNTY, ORE.

SECTION 16, TOWNSHIP 20 SOUTH, RANGE 10 WEST, W.M.

DOUGLAS COUNTY, OREGON

OCTOBER, 1970

1" = 600'

FOUND BRASS CAP

40" FIR N35 $\frac{3}{4}$ °E 53.3 FT

18" " S25°E 10.6 FT.

18" " S20°W 8.6 FT.

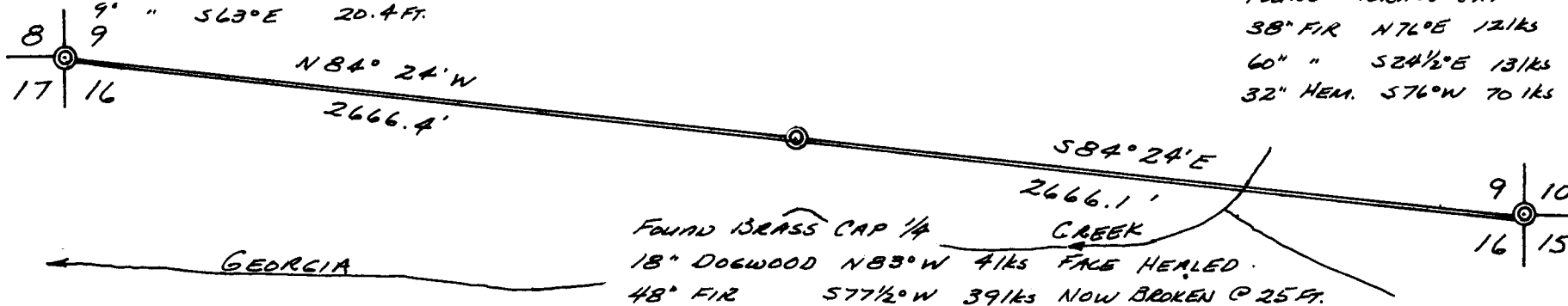
9" " S63°E 20.4 FT.

FOUND BRASS CAP

38" FIR N76°E 121ks

60" " S24 $\frac{1}{2}$ °E 131ks

32" HEM. S76°W 701ks



R. E. STUNTZNER  
FORESTRY & ENGINEERING  
1120 N. 8TH  
COOS BAY, ORE.



CORNERS FOUND

LINES BLAZED, ORANGE  
ALUM. TAGS & FLAGGING