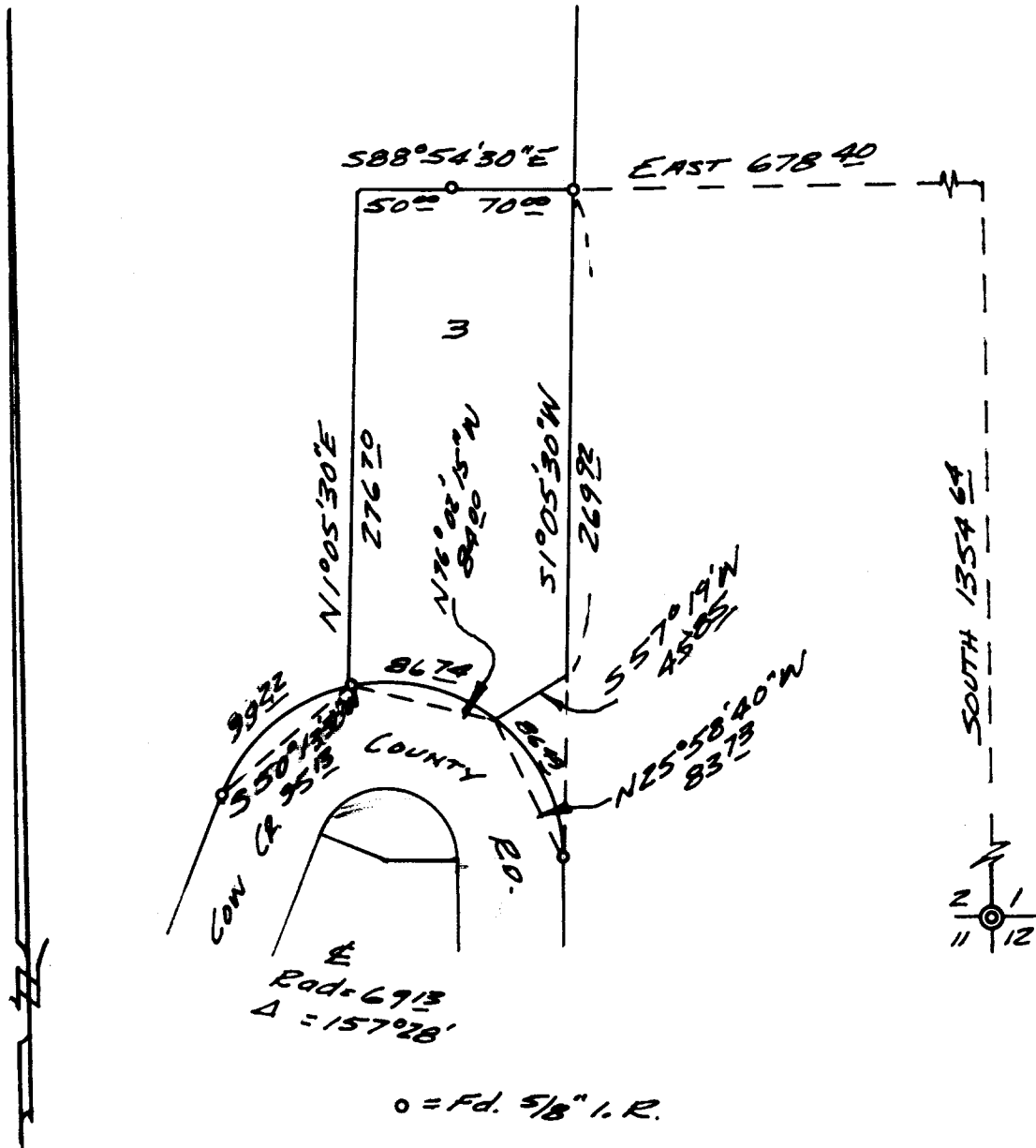


COUNTY SURVEYORS FILE DATA
DO NOT REMOVE FROM OFFICE

FILED *LL*
RECEIVED

SEP 4 1970

COUNTY SURVEYOR
DOUGLAS COUNTY, ORE.



*SURVEY FOR DEED DESCRIPTION
IN SEC. 2, T. 32S., R. 3W., W.M.
FOR WESTLAND PROPERTIES INC.
CHAS. THOMAS PRES.
BY B. ROGERS
SEPT., 1970
1" = 100'*

REGISTERED
OREGON
LAND SURVEYOR

Bruce R. Rogers

JULY 10, 1954
BRUCE R. ROGERS
660