

FILED
RECEIVED

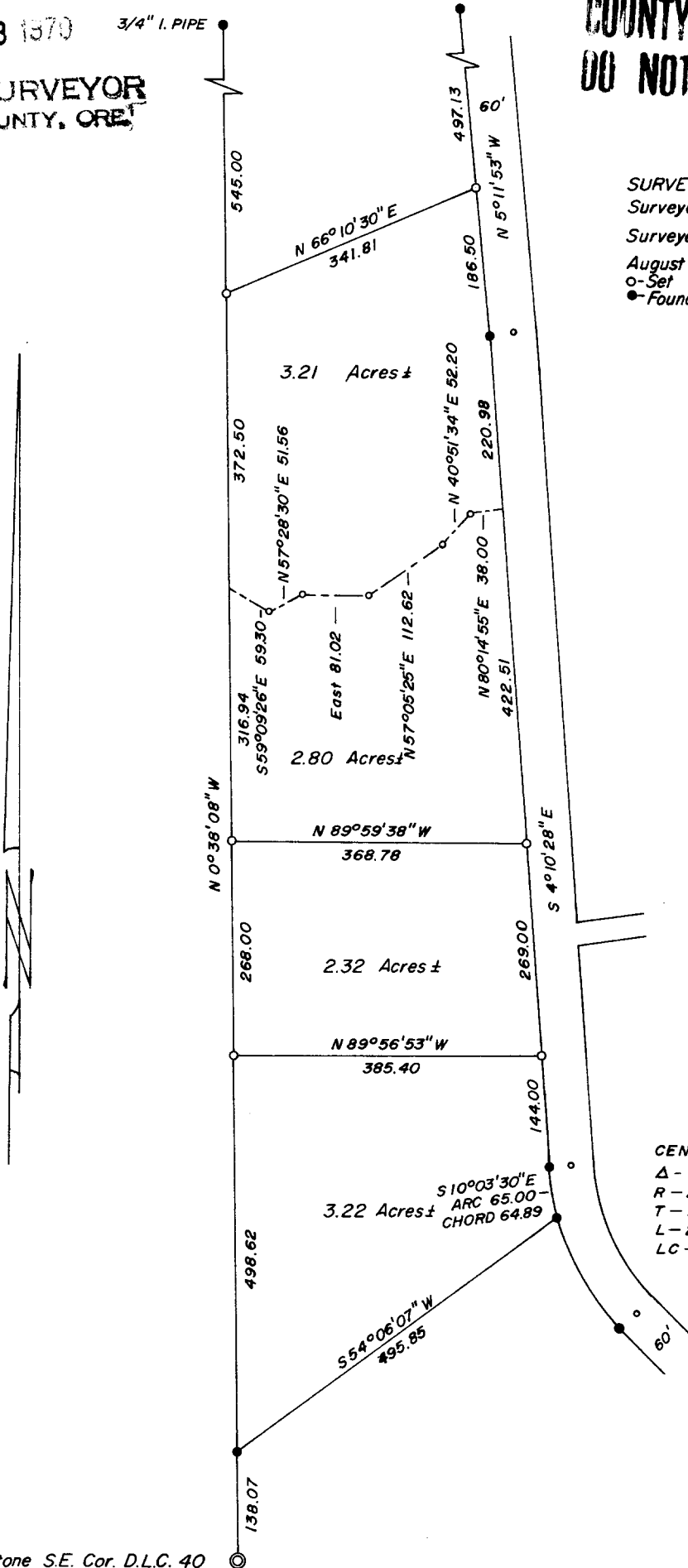
AUG 18 1970

3/4" I. PIPE

COUNTY SURVEYOR
DOUGLAS COUNTY, ORE.

COUNTY SURVEYORS FILE DATA
DO NOT REMOVE FROM OFFICE

SURVEY IN SECT. 1, T29S, R6W, W.M.
Surveyed for S&S Builders Inc.
Surveyed by Don E. Garrett
August 1970 Scale 1" = 200'
o-Set 3/4" I. Pipe
●-Found 3/4" I. Pipe



REGISTERED
OREGON
LAND SURVEYOR

Don E. Garrett

JULY 14, 1961
DON E. GARRETT
544

CENTERLINE
Δ - 40°17'17"
R - 286.48
T - 105.09
L - 201.44
LC - S 24°19'06"E
197.32

Found Stone S.E. Cor. D.L.C. 40