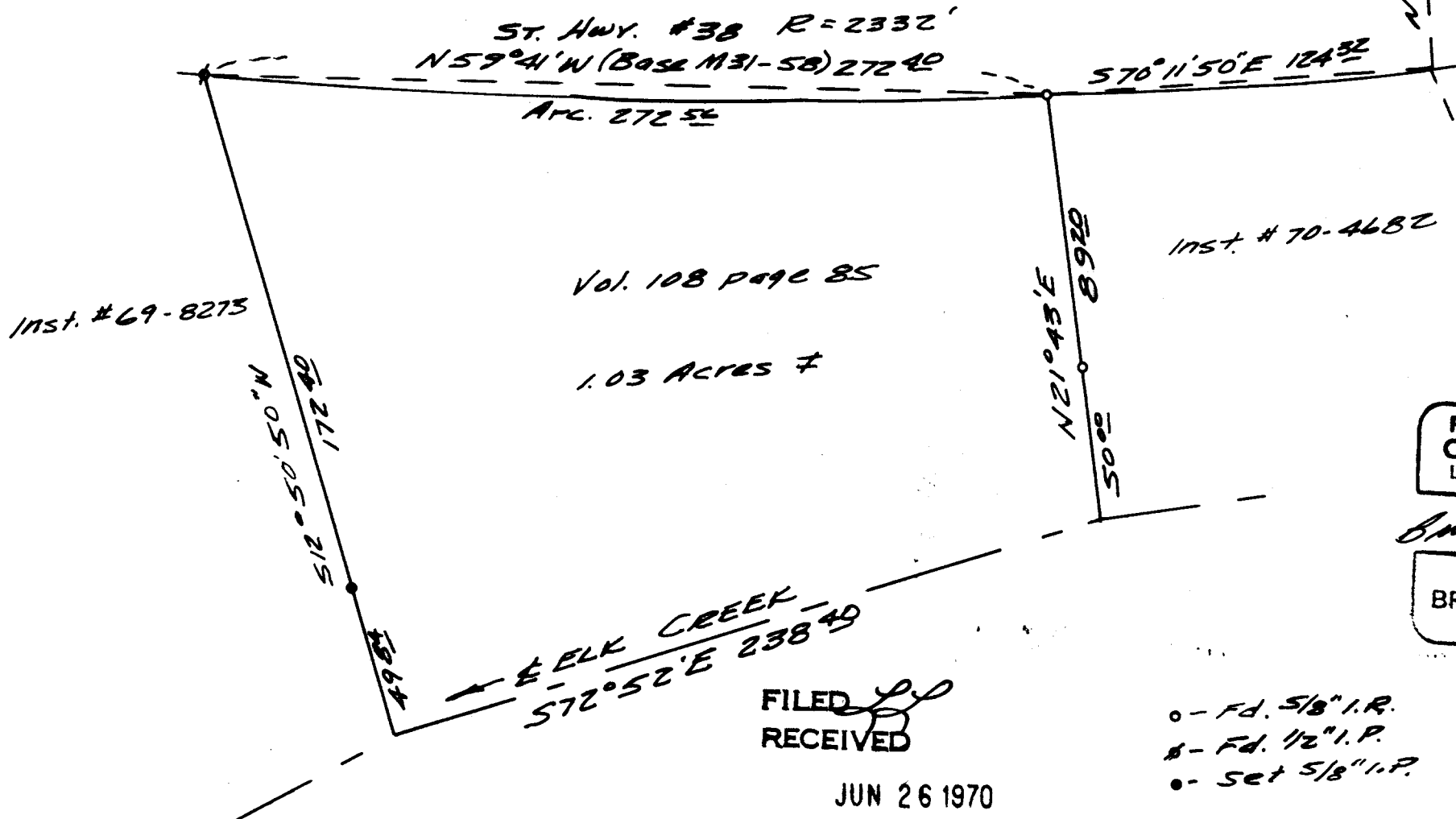


SURVEY FOR DEED DESCRIPTION
 IN SEC. 13, T. 22 S., R. 6 W. W.M.
 FOR W.E. CLEVINGER
 by BRUCE ROGERS
 JUNE, 1970
 1" = 50'

COUNTY SURVEYORS FILE DATA
 DO NOT REMOVE FROM OFFICE



Inst. #69-8273

ST. HWY. #38 R=2332'
 N59°41'W (Base 131-58) 272.40

S70°11'50\"/>

ARC. 272.56

Vol. 108 page 85

1.03 ACRES ±

N21°43'E 89.20
 50.00

Inst. #70-4682

REGISTERED
 OREGON
 LAND SURVEYOR

Bruce L. Logans

JULY 10, 1954
 BRUCE R. ROGERS
 660

ELK CREEK - 49
 S72°52'E 238.49

FILED
 RECEIVED

JUN 26 1970

COUNTY SURVEYOR
 CLATSOP COUNTY, ORE.

- o - Fd. 5/8" I.P.
- o - Fd. 1/2" I.P.
- o - Set 5/8" I.P.