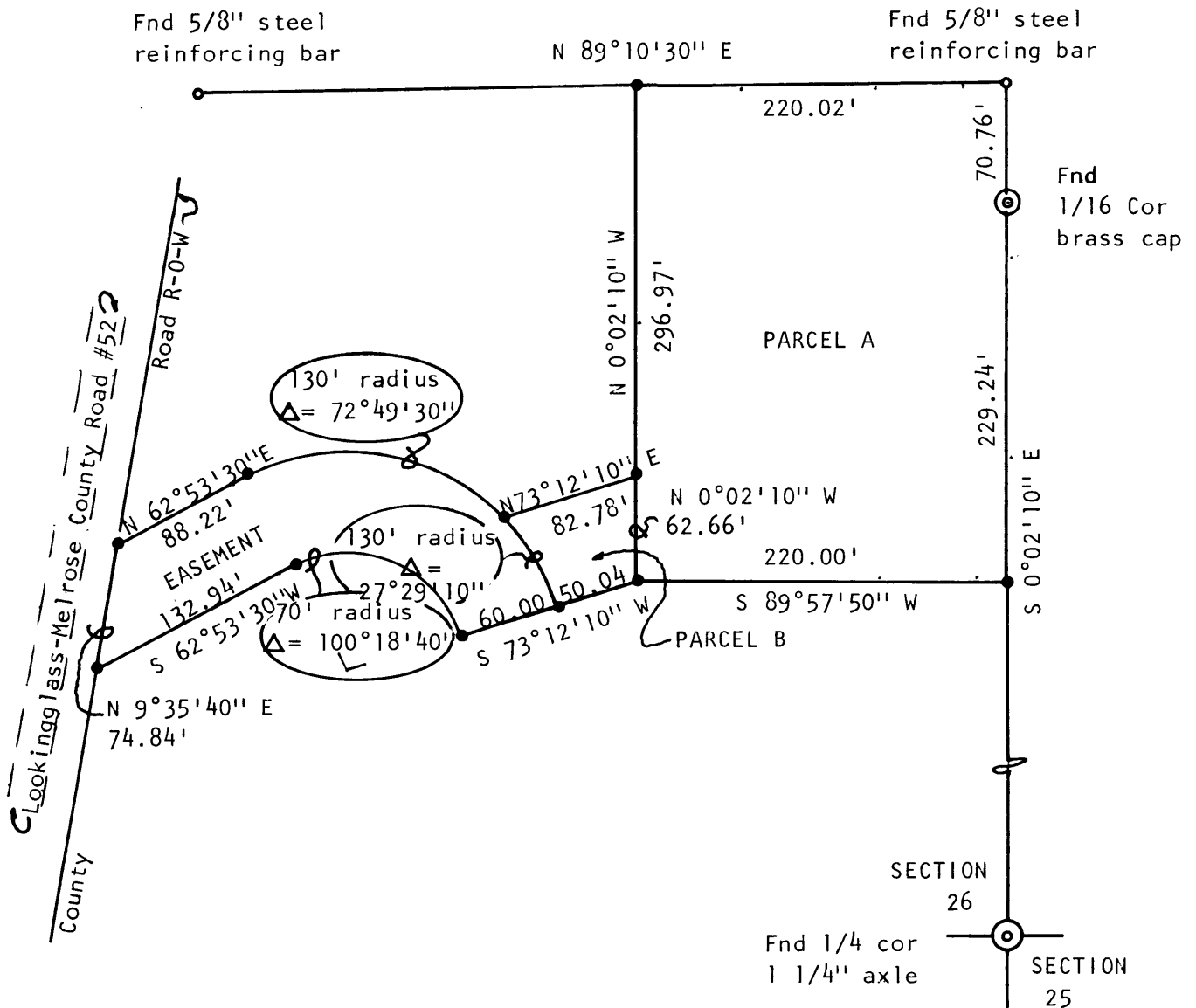


FILED
RECEIVED

SEP 25 1970

COUNTY SURVEYOR
DOUGLAS COUNTY, ORE.

COUNTY SURVEYORS FILE DATA
~~DO NOT REMOVE FROM FILE~~



- found as shown
- set 5/8" diameter steel reinforcing bar

SURVEY ON COOPER - WILLIAMS PROPERTY
TO SET CORNERS AS SHOWN
S26 T27S R7W., WM
March, 1970



1"=100'

Base of bearings:
Solar of Douglas County
Rd. Dept. survey, 1969