

FILED
RECEIVED

JUN 16 1970

COUNTY SURVEYOR
DOUGLAS COUNTY, ORE

COUNTY SURVEYORS FILE DATA
DO NOT REMOVE FROM OFFICE

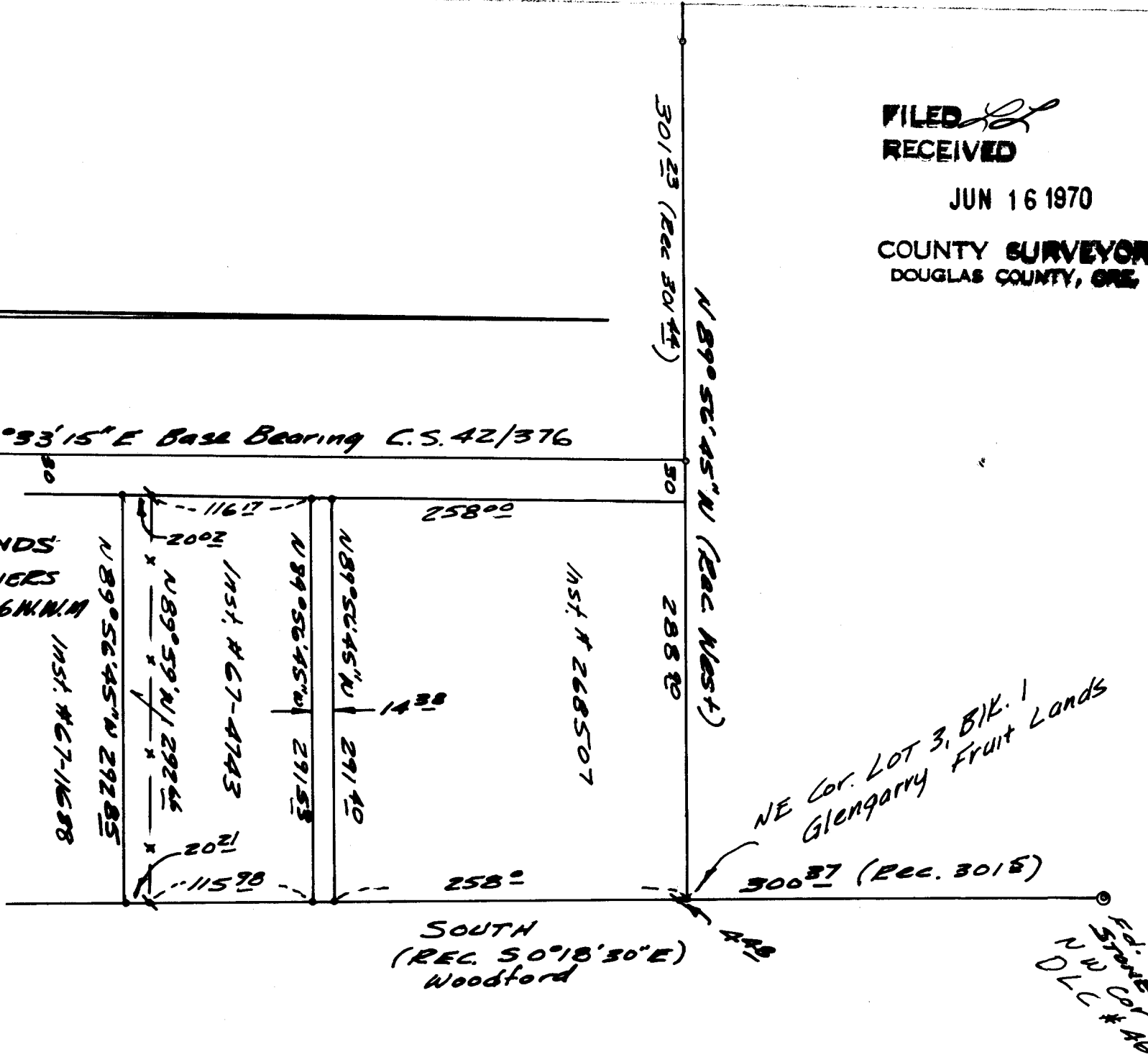
N 0° 33' 15" E Base Bearing C.S. 42/376

PART OF LOT 2, GLENGARRY FRUITLANDS
SURVEY TO SET PROPERTY CORNERS
IN THE S.W. 1/4 OF SEC 13, T. 28 S., R. 6 W. N. M.
SURVEYED FOR EVANS
BY B. ROGERS
MAY, 1970
1" = 100'

REGISTERED
OREGON
LAND SURVEYOR

Bruce R. Rogers

JULY 10, 1954
BRUCE R. ROGERS
660



- Fd. Iron Pipe C.S. File 42/376
- Fd. Iron Pipe Not of Record
- Set 5/8" Iron Rod.

55/153-1