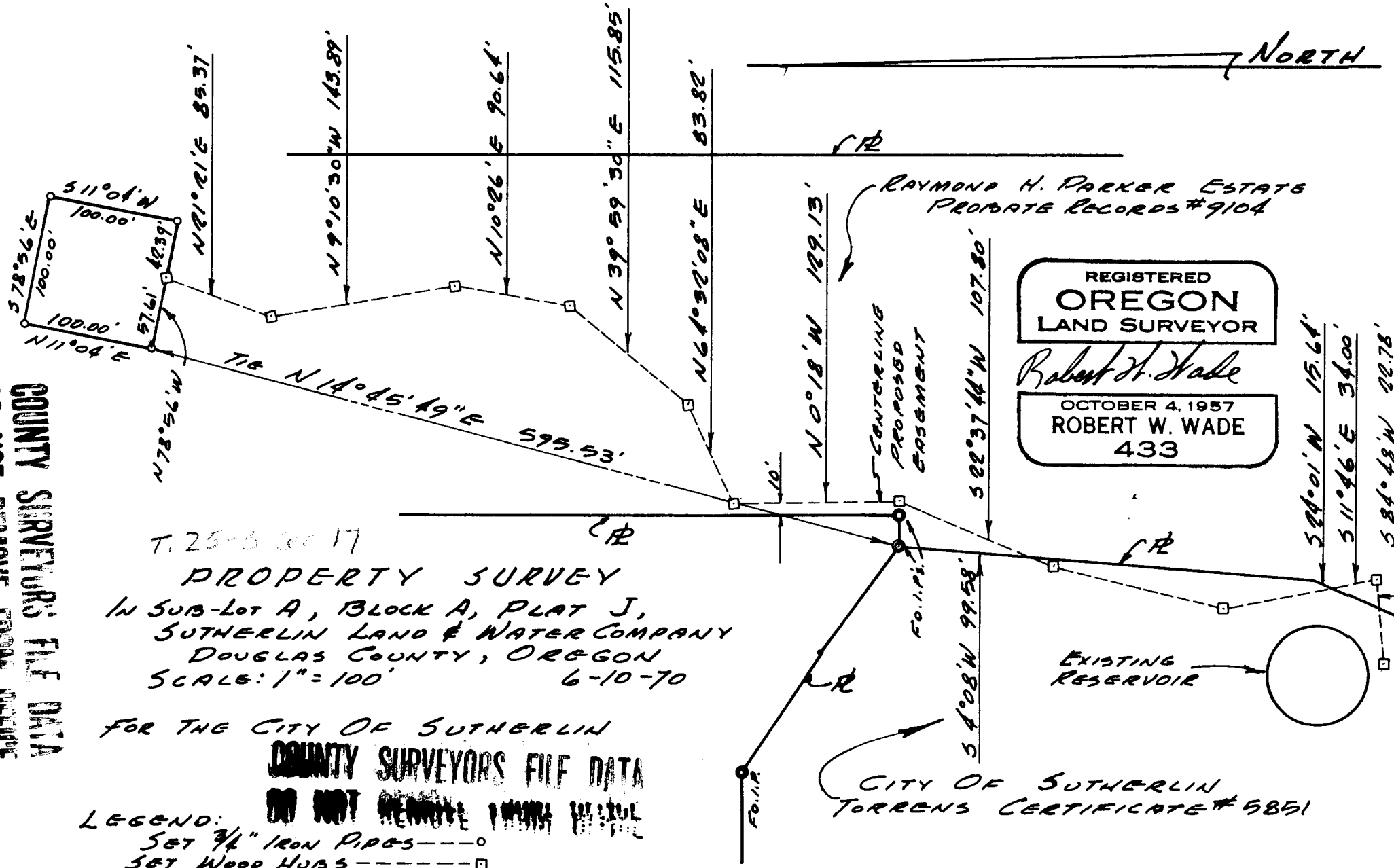


DO NOT REMOVE FROM OFFICE
COUNTY SURVEYORS' FILE DATA



T. 25-S 30-17
PROPERTY SURVEY
IN SUB-LOT A, BLOCK A, PLAT J,
SUTHERLIN LAND & WATER COMPANY
DOUGLAS COUNTY, OREGON
SCALE: 1" = 100' 6-10-70

FOR THE CITY OF SUTHERLIN

COUNTY SURVEYORS FILE DATA

DO NOT REMOVE FROM OFFICE

LEGEND:
SET 3/4" IRON PIPES ---○---
SET WOOD HUBS ---□---

REGISTERED
OREGON
LAND SURVEYOR
Robert W. Wade
OCTOBER 4, 1957
ROBERT W. WADE
433

FILED
RECEIVED

JUN 11 1970

COUNTY SURVEYORS
DOUGLAS COUNTY, ORE.

A ■ HARLAN ■ GESSFORD
ARCHITECTS
COMMUNITY
5TH & HIGHLAND

■ ERICHSEN
ENGINEER
PLANNERS
COOS BAY, OREGON