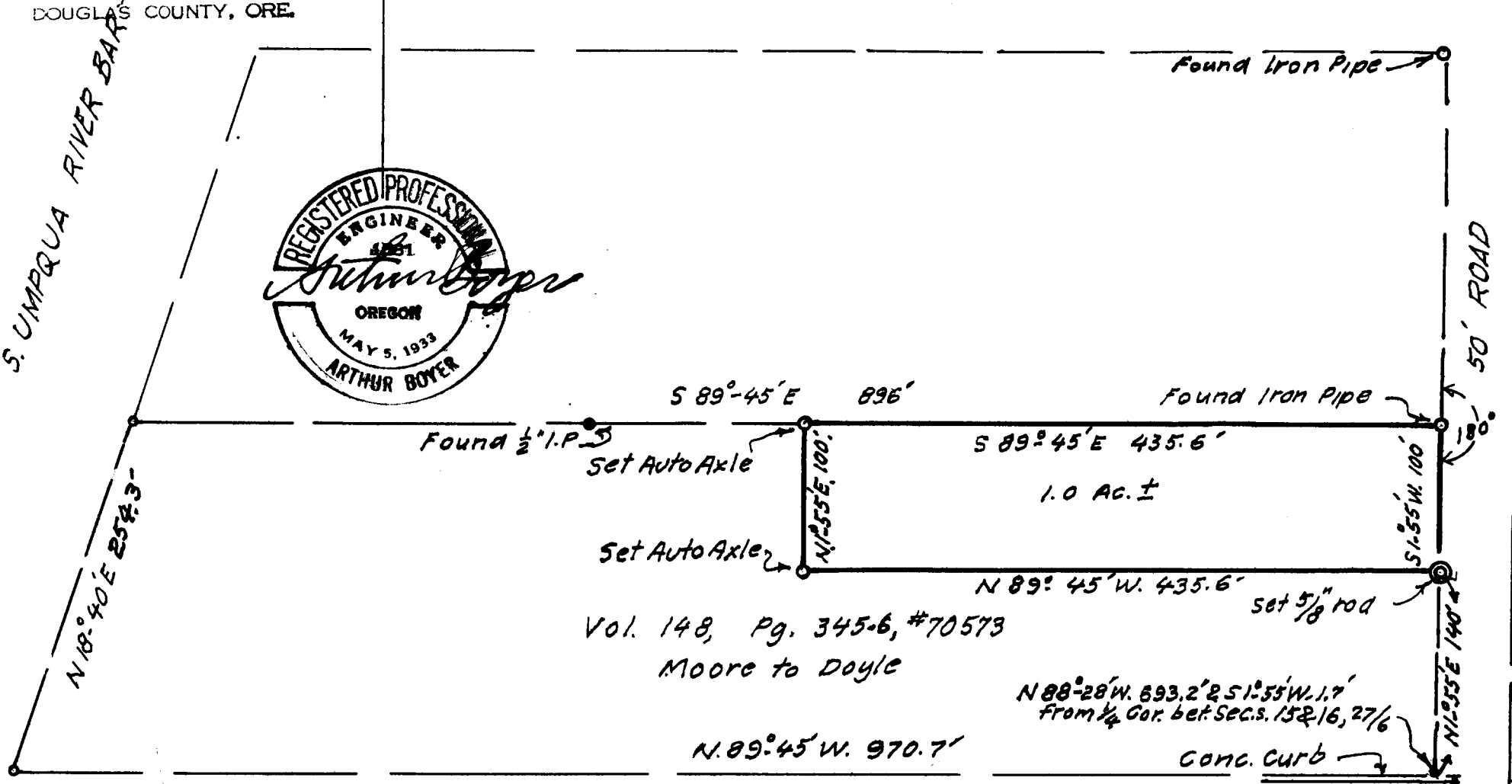


FILED *LL*
RECEIVED

APR 17 1970

COUNTY SURVEYOR
DOUGLAS COUNTY, ORE.



COUNTY SURVEYORS FILE DATA
DO NOT REMOVE FROM OFFICE

JOHN W. & MARGARET H. DOYLE
ACREAGE IN E 1/2 SEC. 16, T. 27 S.; R. 6 W.; W. M.;
DOUGLAS COUNTY, ORE
APR 1970

1" = 100 FT.

P. C. S. No. 55/146-1