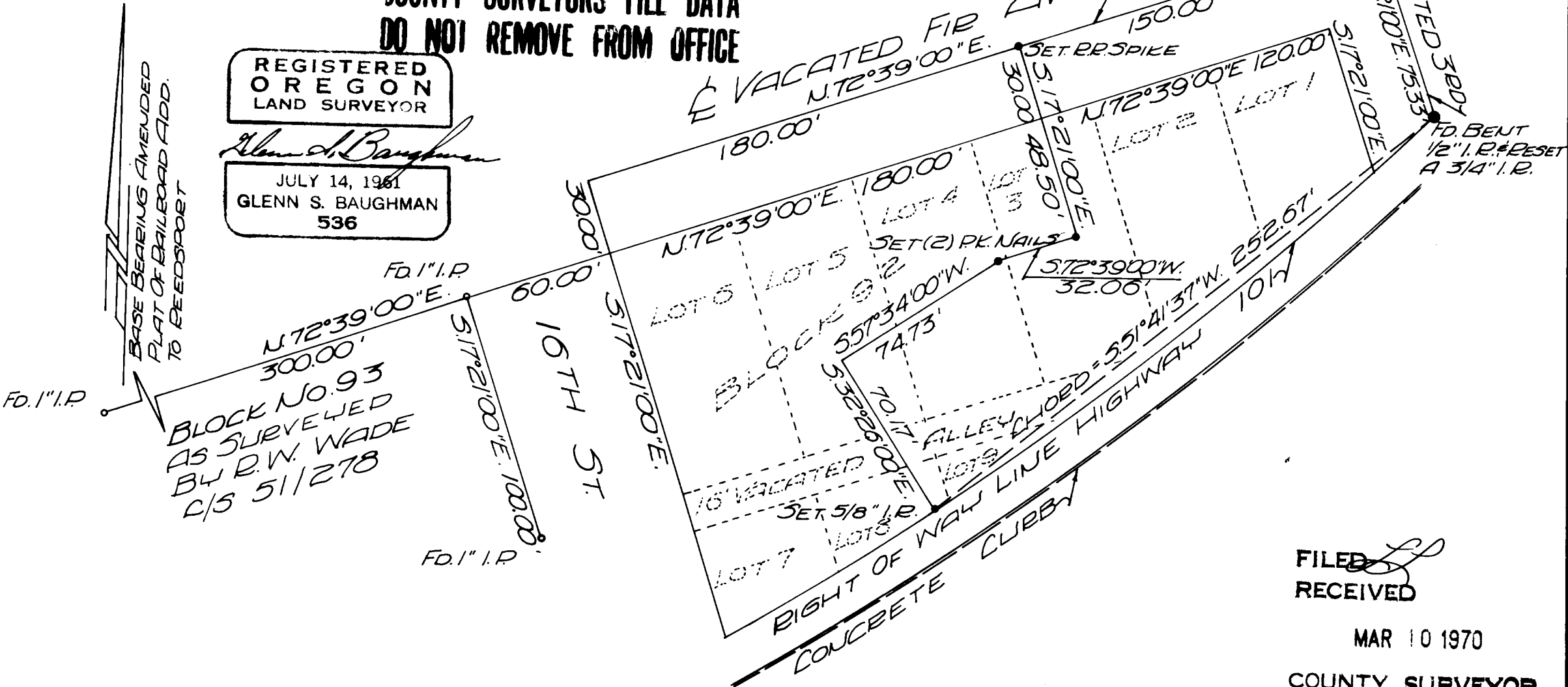


SURVEYED TO ESTABLISH PROPERTY CORNERS  
 SITUATED IN BLK. 92, AMENDED PLAT OF RAILROAD  
 ADDITION TO REEDSPORT, SEC. 35, TWP. 21 S., R. 12 W. W.M.  
 SURVEYED FOR GEORGE HLITTER 34 BS 2/1/53 SET 3/4" I.P.  
 BY BAUGHMAN & ACKARET INC. FEB. 1970  
 SCALE 1" = 50' COUNTY SURVEYORS FILE DATA  
 DO NOT REMOVE FROM OFFICE

REGISTERED  
 OREGON  
 LAND SURVEYOR

*Glenn S. Baughman*

JULY 14, 1961  
 GLENN S. BAUGHMAN  
 536



FILED  
 RECEIVED

MAR 10 1970

COUNTY SURVEYOR  
 DOUGLAS COUNTY, ORE.