

LOT 1, Block 14
PLAT "D"

LOT 4, Blk
PLAT "D"

FILED
RECEIVED

JUL 29 1970

PORTLAND AVE

VACATED PORTLAND AVE

COUNTY SURVEYOR
DOUGLAS COUNTY, ORE.

to 3/4" I.P. (C.S.M 33-40)

LOT 1 Block 13
PLAT "D"

COUNTY SURVEYORS FILE DATA
DO NOT REMOVE FROM OFFICE

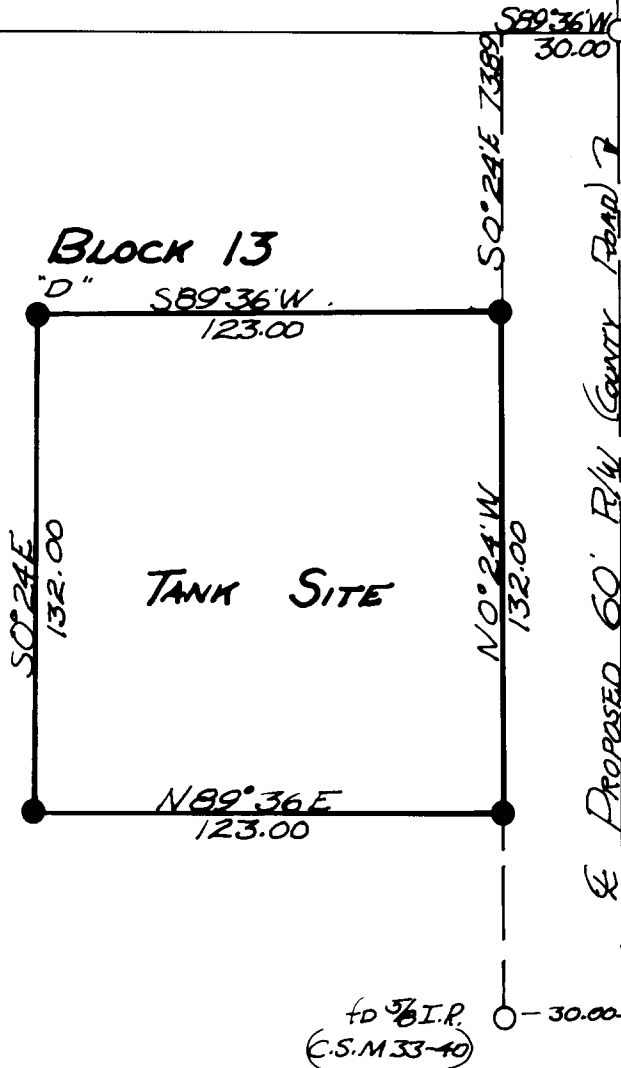
LOT 4 BLOCK 2
PLAT "D"

REGISTERED
OREGON
LAND SURVEYOR

Donald A. Bentz
JULY 12, 1968
DONALD A. BENTZ
839



BASE BEARING:
EAST LINE LOT
1 Block 13 per
C.S. M 33-40



SURVEY & PLAT FOR
OREGON WATER CORP.
ROSEBURG, OREGON

SECTION 25 T27S R6W W.M.
UMPOUA PARK FRUITLANDS
DOUGLAS COUNTY, ORE.
BY DONALD A. BENTZ L.S.
SCALE 1" = 50' JUNE 1970

● SET 5/8" I. Pbd