

**COUNTY SURVEYORS FILE DATA
DO NOT REMOVE FROM OFFICE**

T. 27-5 Sec. 18

**SURVEY IN BLOCK 41
KINNEY'S IMPROVED PLAT OF ROSEBURG**

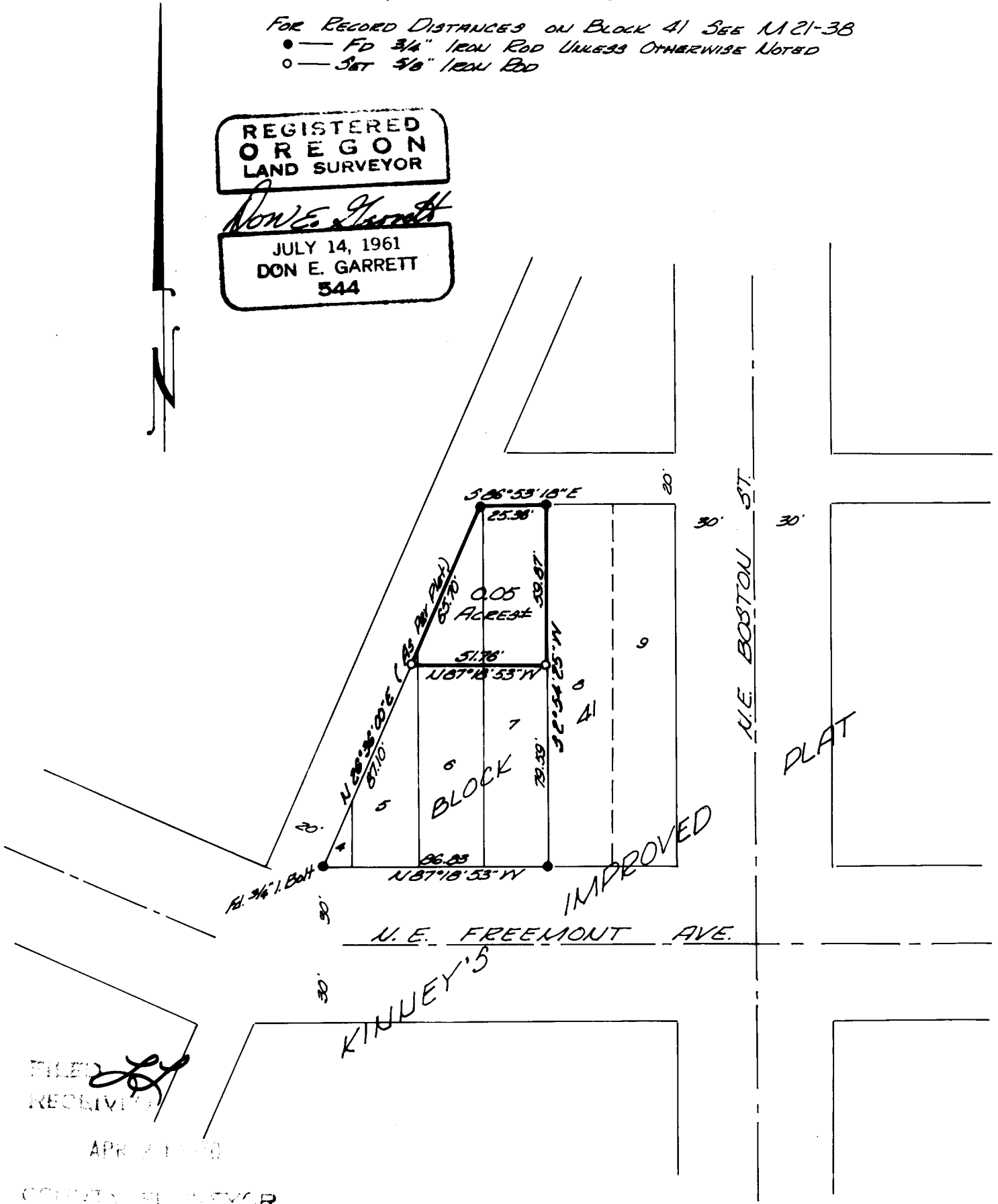
SURVEYED FOR H.G. PLUMLEE
SURVEYED BY DON E. GARRETT
APRIL 17, 1970 SCALE: 1" = 50'

FOR RECORDED DISTANCES ON BLOCK 41 SEE M 21-38
● — FD 3/4" IRON ROD UNLESS OTHERWISE NOTED
○ — SET 5/8" IRON ROD

REGISTERED
OREGON
LAND SURVEYOR

Don E. Garrett

JULY 14, 1961
DON E. GARRETT
544



FILED
RECEIVED

APR 21 1970

COUNTY SURVEYOR
CLATSOP COUNTY, ORE.