

COUNTY SURVEYORS FILE DATA  
DO NOT REMOVE FROM OFFICE

SURVEY TO REESTABLISH THE N.W.  
CORNER OF LOT 66, EDEN ORCHARDS  
LOCATED IN SECTION 4, T27S, R7W, W.M.

SURVEYED FOR FLOYD FELT  
SURVEYED BY DON E. GARRETT  
JANUARY, 1970 SCALE: 1"=200'

REGISTERED  
OREGON  
LAND SURVEYOR

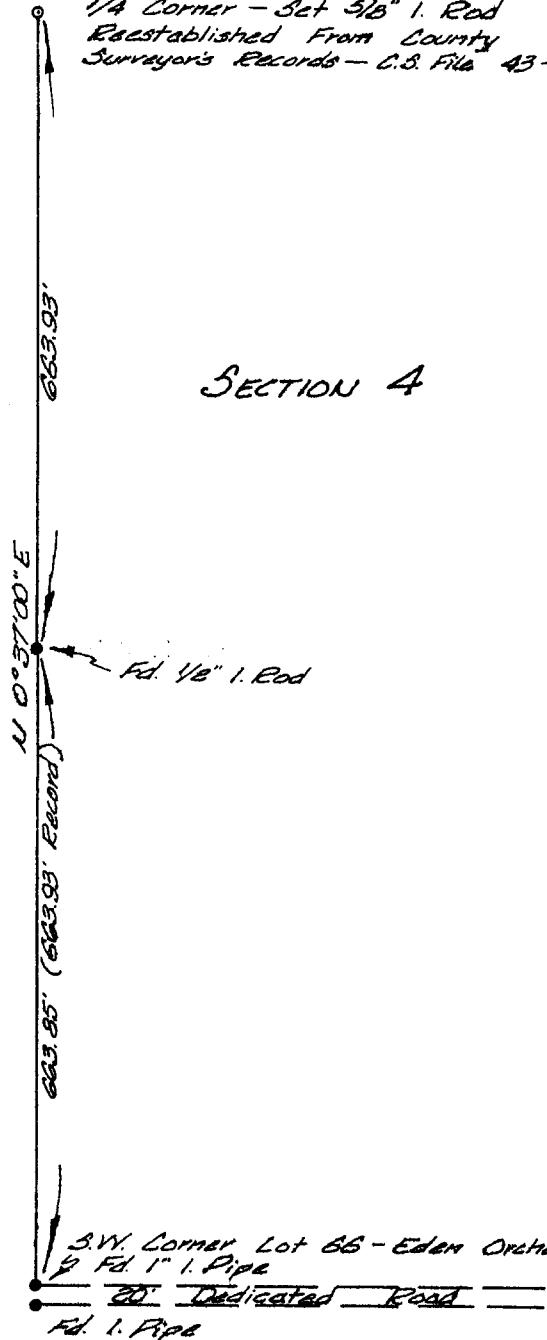
*Don E. Garrett*

JULY 14, 1961  
DON E. GARRETT  
544

N.W. Corner Lot 66 - Eden Orchards  
1/4 Corner - Set 5/8" I. Rod  
Reestablished From County  
Surveyors Records - C.S. File 43-10

SECTION 5

SECTION 4



FILED  
RECEIVED

JAN 29 1970

COUNTY SURVEYOR  
DOUGLAS COUNTY, ORE.