



NEST 108556

**COUNTY SURVEYORS FILE DATA
DO NOT REMOVE FROM OFFICE**

SURVEY TO SET PROPERTY CORNERS
IN SEC. 13, T. 27S, R. 7N, W. 1M.
FOR GARDEN VALLEY REALTY
BY BRUCE ROGERS
APR. 1970
1" = 200'

COR. TIE, BEARINGS & DISTANCES
FROM A SURVEY BY H.L. NORTHKRAFT
SEPT., 1968 M35-44

REGISTERED
OREGON
LAND SURVEYOR

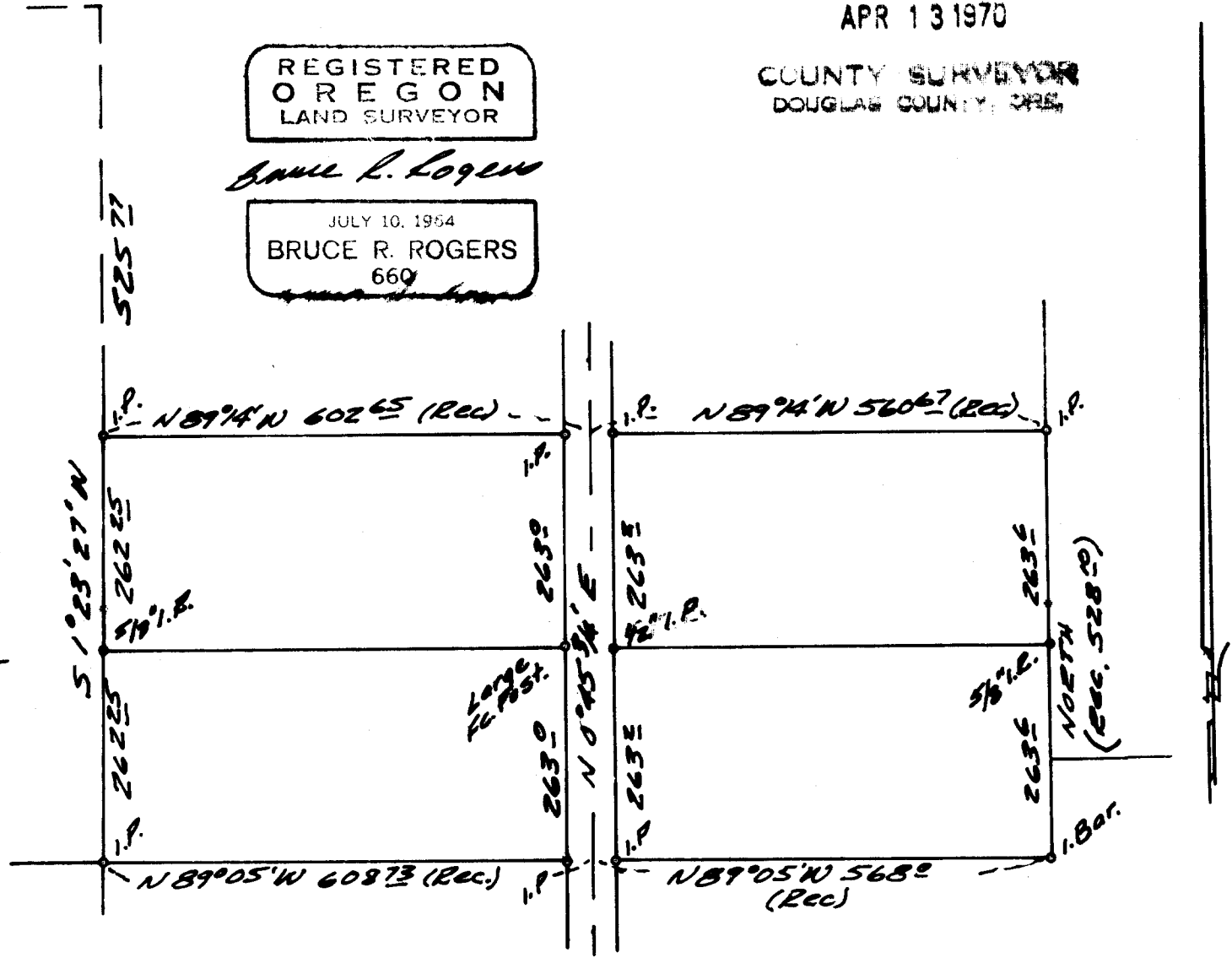
Bruce R. Rogers

JULY 10, 1964
BRUCE R. ROGERS
660

FILED *LR*
RECEIVED

APR 13 1970

COUNTY SURVEYOR
DOUGLAS COUNTY, ORE.



o - Found
--- Set