

# SURVEYED FOR DEED DESCRIPTION

LOCATED IN SECTION 5 TWP. 24S, R. 5W. W.M.

FOR DELMAR RICE

JULY 18, 1969

BY BAUGHMAN'S ACKARET INC.

FILED *LS*  
RECEIVED

OCT 1 1969

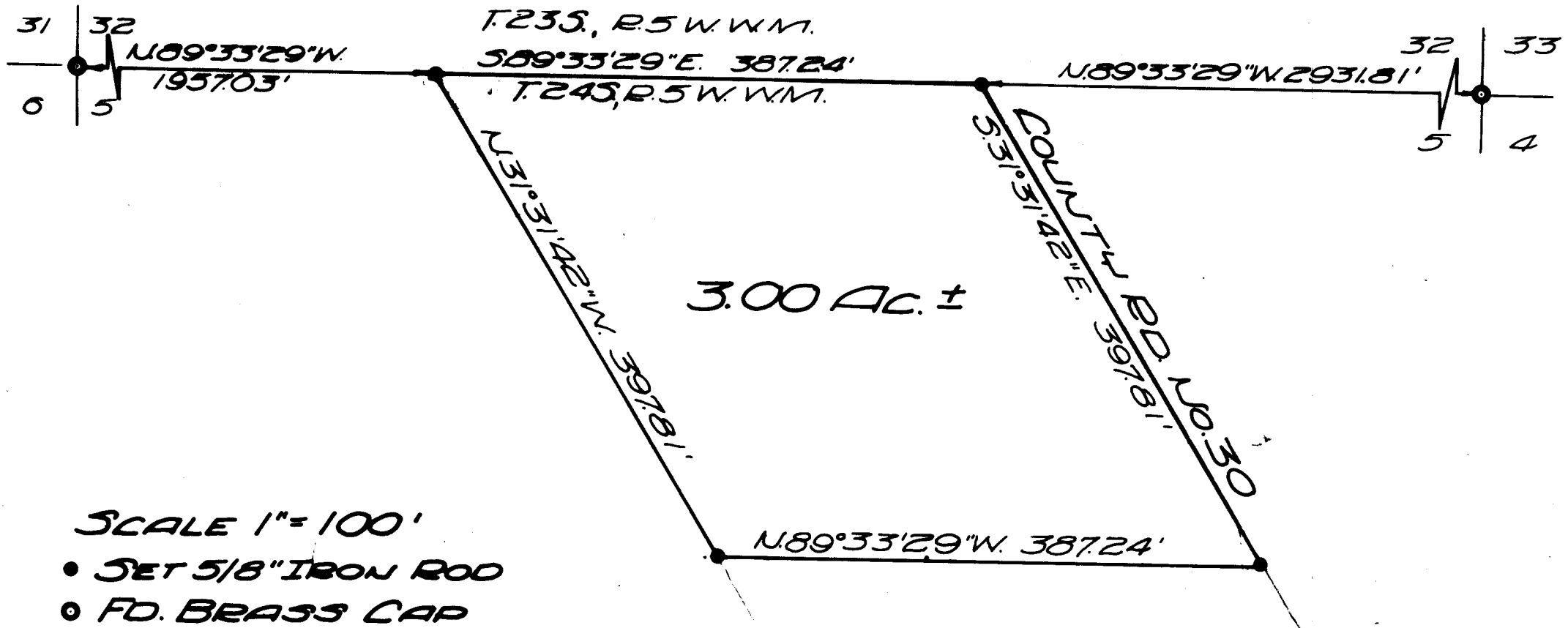
COUNTY SURVEYOR  
DOUGLAS COUNTY, ORE.

COUNTY SURVEYORS FILE DATA  
DO NOT REMOVE FROM OFFICE

REGISTERED  
OREGON  
LAND SURVEYOR

*Glenn S. Baughman*

JULY 14, 1961  
GLENN S. BAUGHMAN  
536



BASE BEARINGS SOLAR OBSERVATION