

SURVEYED FOR DEED DESCRIPTION

LOCATED IN SEC. 3, TWP 26 S, R. 7 W. W. M.

FOR JOHN THOMAS
BY BAUGHMAN & ACKERET INC. MAY 1969

NOTE: THIS MAP IS A CORRECTION MAP OF M 34-13

COUNTY SURVEYORS FILE DATA
DO NOT REMOVE FROM OFFICE

FILED
RECEIVED

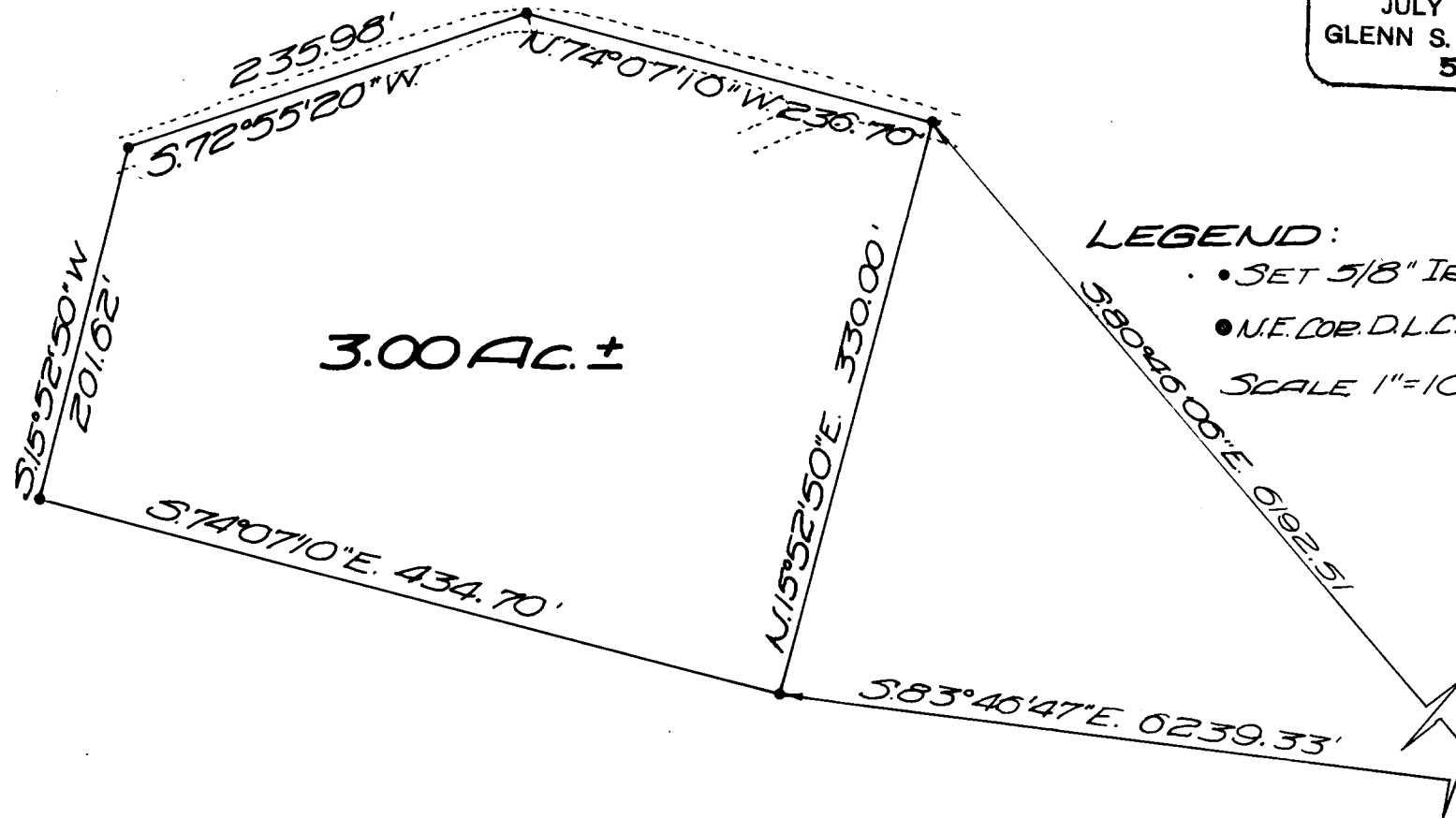
OCT 1 1969

COUNTY SURVEYOR
DOUGLAS COUNTY, ORE.

REGISTERED
OREGON
LAND SURVEYOR

Glenn S. Baughman

JULY 14, 1961
GLENN S. BAUGHMAN
536



FD. 18" x 18" x 36" STONE
FD. 18" W. OAK BEARS 187° W. 9 7/8"
SCRIBED S.E. COR. #41, N.E. COR. #42 C.S.B.T.

BASE BEARINGS SOLAR OBSERVATION