

T. 21-5 Sec. 7

SURVEYED TO ESTABLISH PROPERTY CORNERS

A PART OF LOTS 137 & 138, TRACT 1, PLAT 1, ROSEBURG ORCHARD COMPANY
SURVEYED FOR THOMAS C. HYERS JR. BY BAUGHMAN & ACKARET INC.

SCALE 1" = 40'

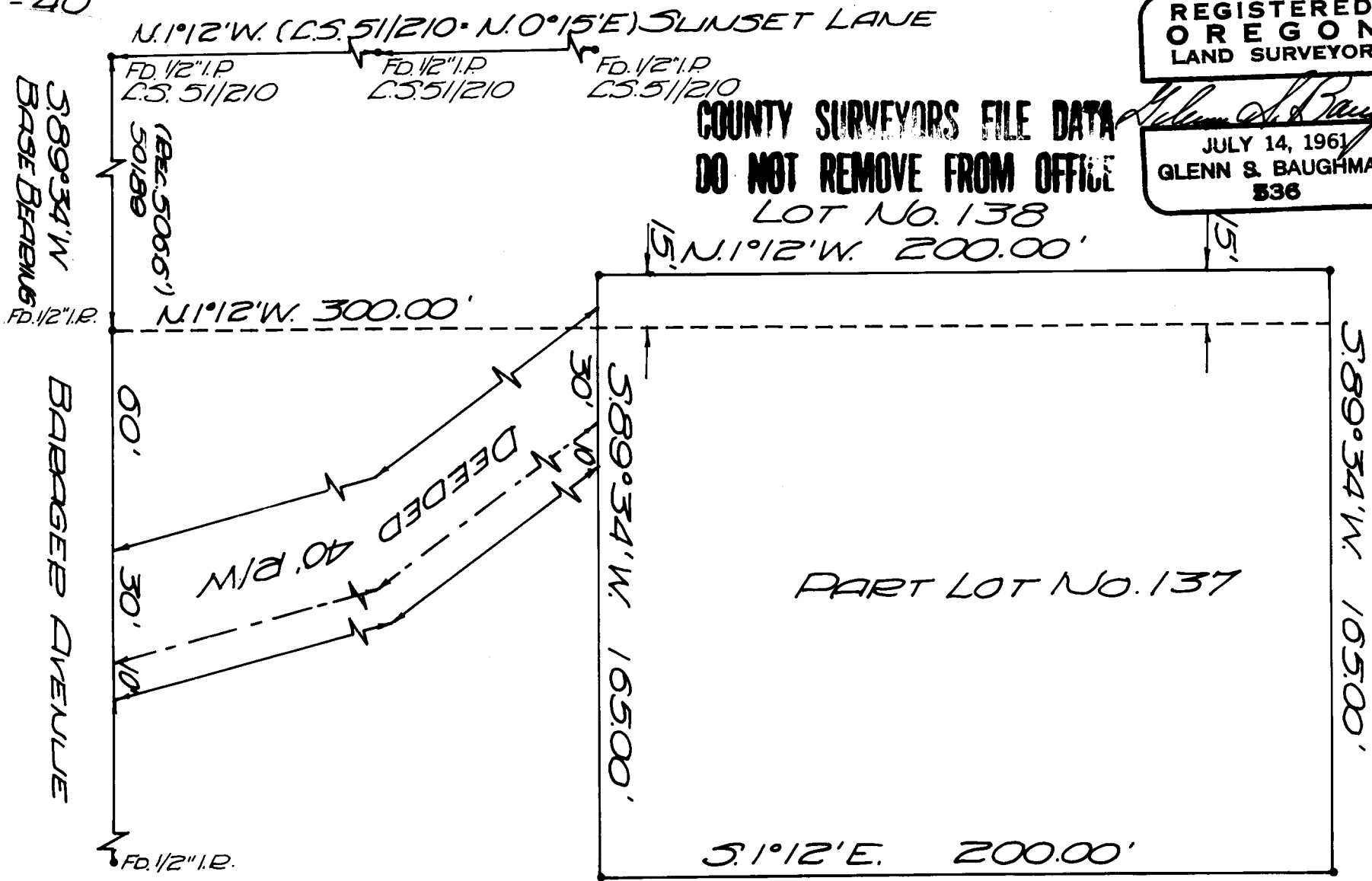
REGISTERED
OREGON
LAND SURVEYOR

Glenn S. Baughman

JULY 14, 1961
GLENN S. BAUGHMAN
536

COUNTY SURVEYORS FILE DATA
DO NOT REMOVE FROM OFFICE

LOT No. 138



FILED
RECEIVED

JUL 7 1969

COUNTY SURVEYOR
DOUGLAS COUNTY, ORE.

- SET 5/8" IRON ROD
- FOUND AS SHOWN

BASE BEARINGS C.S. # 51/210

P.C.S. File No. 55/1164