

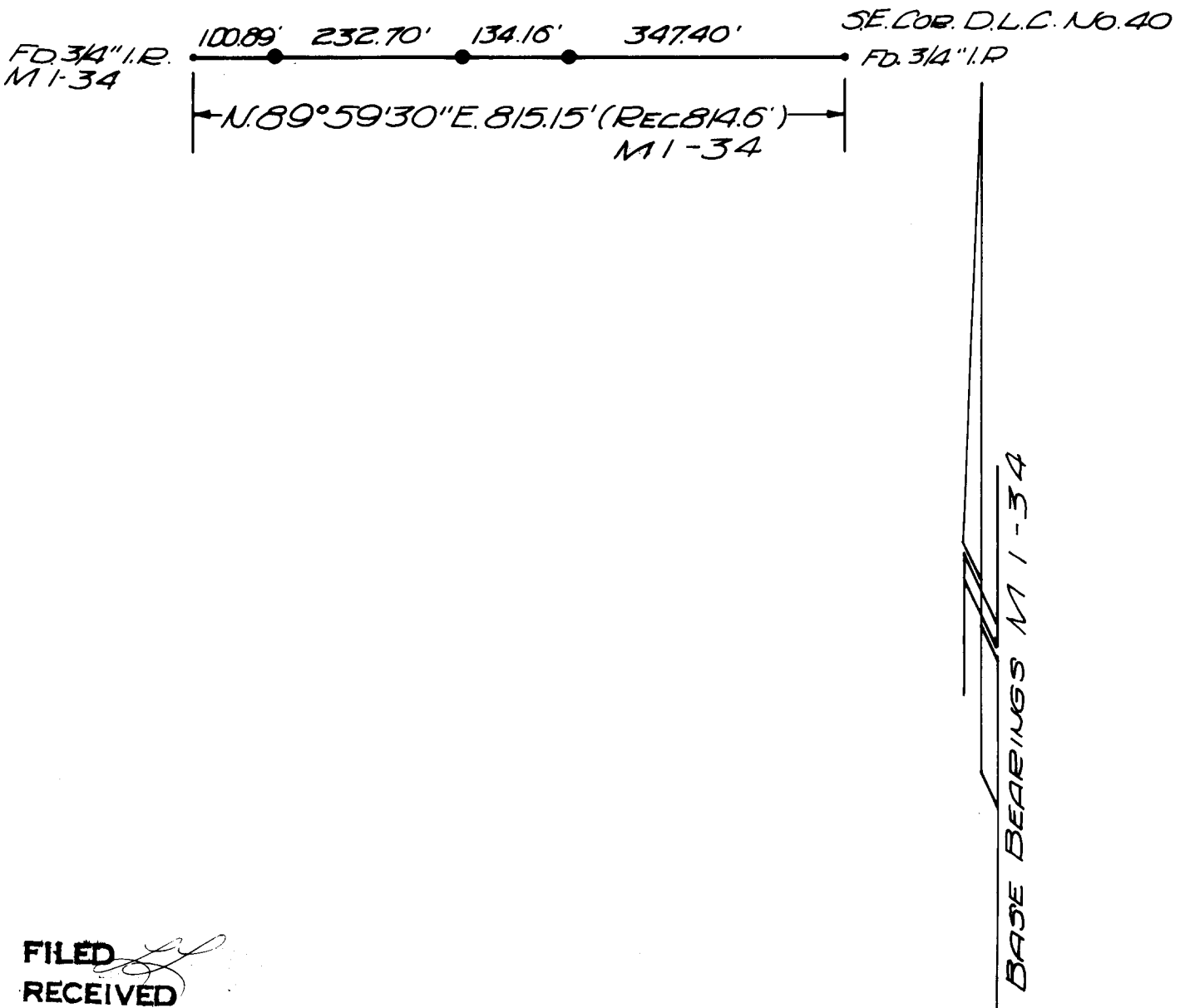
**SURVEY TO ESTABLISH PROPERTY LINE  
 LOCATED IN SEC. 17, TWP 26 S., R6.3 W. W.M.  
 FOR RAYMOND & GERTRUDE BALLOU  
 BY BAUGHMAN & ACKABET INC. DEC. 1968**

SCALE 1"=200'  
 • AS SHOWN  
 • SET 5/8" IRON ROD

**COUNTY SURVEYORS FILE DATA  
 DO NOT REMOVE FROM OFFICE**

REGISTERED  
 OREGON  
 LAND SURVEYOR

*Glenn S. Baughman*  
 JULY 14, 1961  
 GLENN S. BAUGHMAN  
 538



FILED  
 RECEIVED

JUN 10 1969

COUNTY SURVEYOR  
 DOUGLAS COUNTY, ORE.