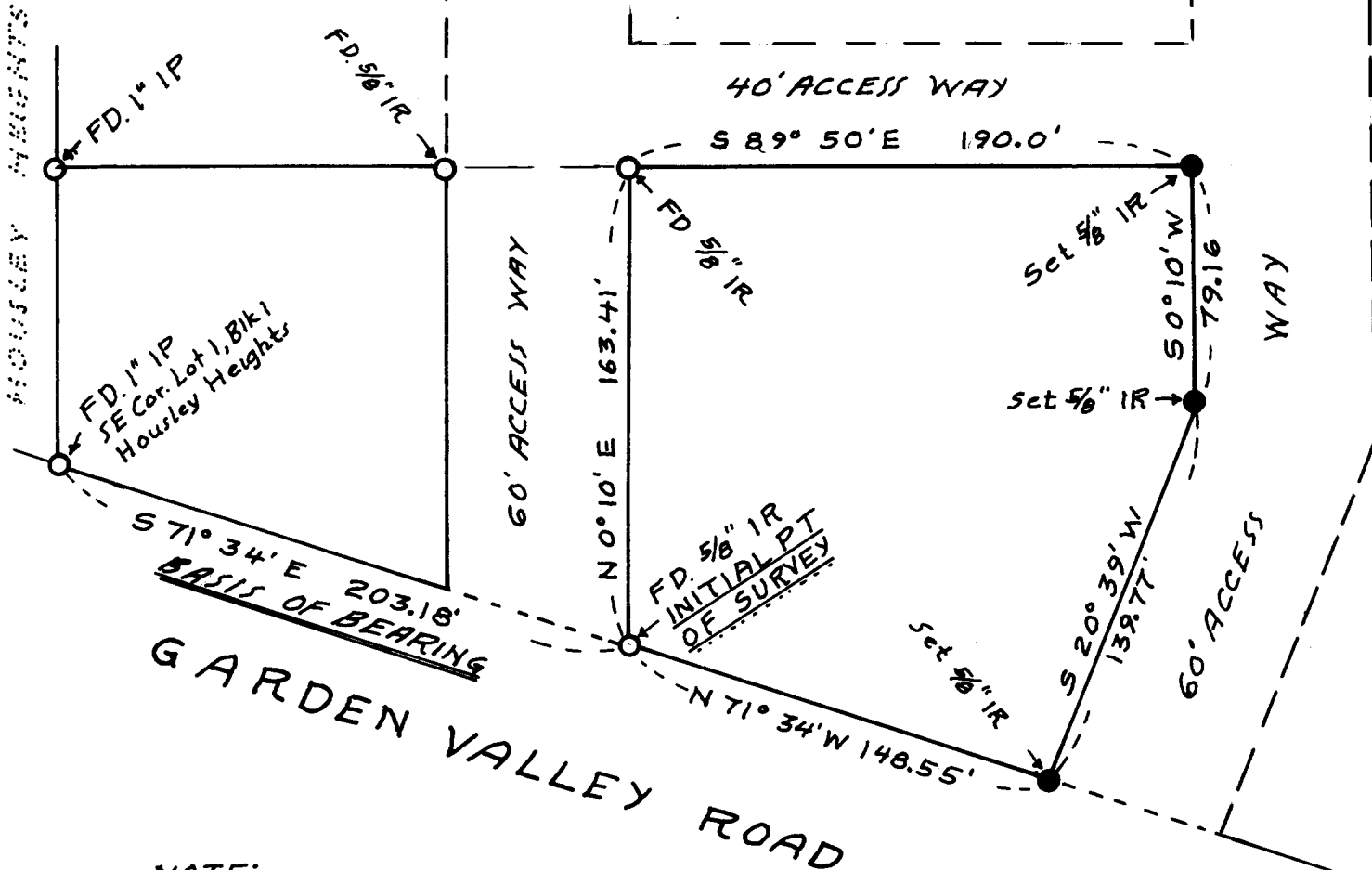
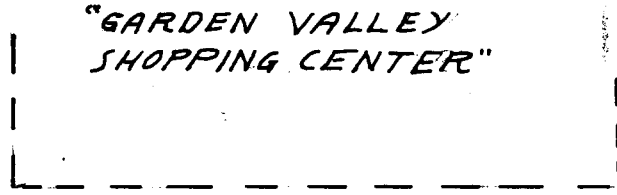


FILED
RECEIVED

APR 18 1969

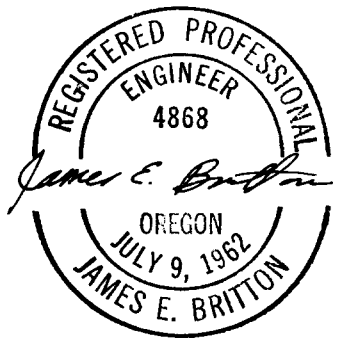
COUNTY SURVEYOR
DOUGLAS COUNTY, ORE.



NOTE:
 5/8" IR, SET ARE 30" LONG.
 REFERENCES: CS 51/33, CS 51/235
 CS 51/268



SURVEY FOR
 STANDARD OIL CO. OF CALIF.
 SEC 13, T 27S, R 6 W W M
 ROSEBURG, DOUGLAS COUNTY, OREGON
 JANUARY 17, 1969



**COUNTY SURVEYORS FILE DATA
 DO NOT REMOVE FROM OFFICE**

- SCALE: 1" = 60' -

QUINER & BRITTON
 CONSULTING ENGINEERS
 751 WEST TWELFTH AVE.
 EUGENE, OREGON 97402

