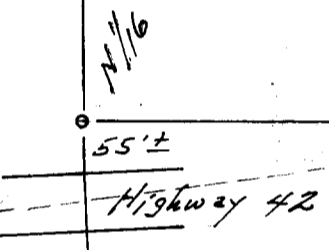


FILED *[Signature]*
 RECEIVED
 MAR 7 1969
 COUNTY SURVEYOR
 DOUGLAS COUNTY, ORE.

Longview Fiber Co.



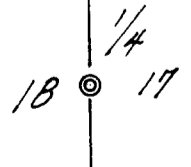
← *Coquille River*

U.S.A. - B.L.M.

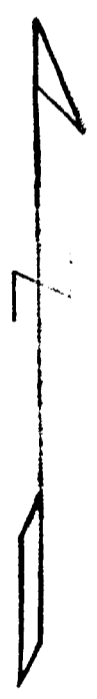
**COUNTY SURVEYORS FILE DATA
 DO NOT REMOVE FROM OFFICE**

PROPERTY SURVEY

For: Coos-Curry Elect. Coop. Inc.
 In: Section 17, T. 30 S., R. 9 W. W. M.
 in Douglas County, Oregon.
 Bearings shown: True; as determined from Solar Observations:
 Monuments found shown: ⊙
 Monuments set shown: ○
 Scale of Map: 1" to 200 ft.
 Survey completed: February 1969.



REGISTERED
 OREGON
 LAND SURVEYOR
[Signature]
 OCTOBER 24 1959
 FORREST J. HALES
 453



FORREST J. JONES
Coquille, Oregon

COUNTY SURVEYORS FILE DATA
DO NOT REMOVE FROM OFFICE

Survey in Section 17, T. 30 S., R. 9 W. W. M.

This survey was made for the purpose of establishing the N 1/16 Corner between Sections 17 and 18, and to locate the approximate South line of the NW, NNE of Section 17.

To accomplish these objectives I start at the Northwest Corner of Section 17 which is marked with a Brass Capped pipe post and BTs as recorded in the Douglas County Surveyor's Office (Refer to # 13173), and run a transit traverse South to the 1/4 Corner for Sections 17 and 18. I also run a transit traverse Easterly to the Northeast Corner of Section 17 to determine the bearing and distance of the North line of Section 17. At the 1/2 mile point we made a thorough search for evidence of the original 1/4 Corner. This appears to be a lost Corner. I find the North line bears South $89^{\circ}51'$ East for a distance of 5207.6 feet.

T

The West line bears South $0^{\circ}47'$ East for a distance of 2662.46 feet. at the midpoint on this line I set a $5/8"$ Iron Rod to mark the North 1/16 Corner for Sections 17 and 18. A $4"$ Madrona bears South 30° West 3.3 feet marked "BT N1/16 S18 453"

From this corner the south bank of the Coquille River is 285 feet. South, the center of Highway 42 is 84 feet South; and I find a $40"$ Fir stump 72 feet North. I take this to be the "28 inch Fir" mentioned in Mr. Bushey's Notes dated September 4, 1893.

From the above mentioned N 1/16 Corner I run South $89^{\circ}51'$ East on a line parallel with the North line to mark the approximate South line of the NW, NNE for a distance of approximately 1000 feet where Highway 42 crosses into said NW, NNE.

At the Northeast Corner of Section 17 we found the Brass Capped pipe post in place in good condition and the BTs as recorded in the Douglas County Surveyor's Office.

At the 1/4 Corner to Sections 17 and 18 we found the Brass Capped pipe post lying above ground. We reset this in its correct location from the new BTs as described in C. S. file #53/53.

This survey was run as an open traverse; Solar Observations were taken on the first and last courses and magnetic readings recorded at each traverse point to guard against angular errors.


Forrest J. Jones
Oregon # 453

FILED
RECEIVED

MAR 7 1969

COUNTY SURVEYOR
DOUGLAS COUNTY, ORE.

POSTED IN VISUAL

C. S. File No. 55/1086