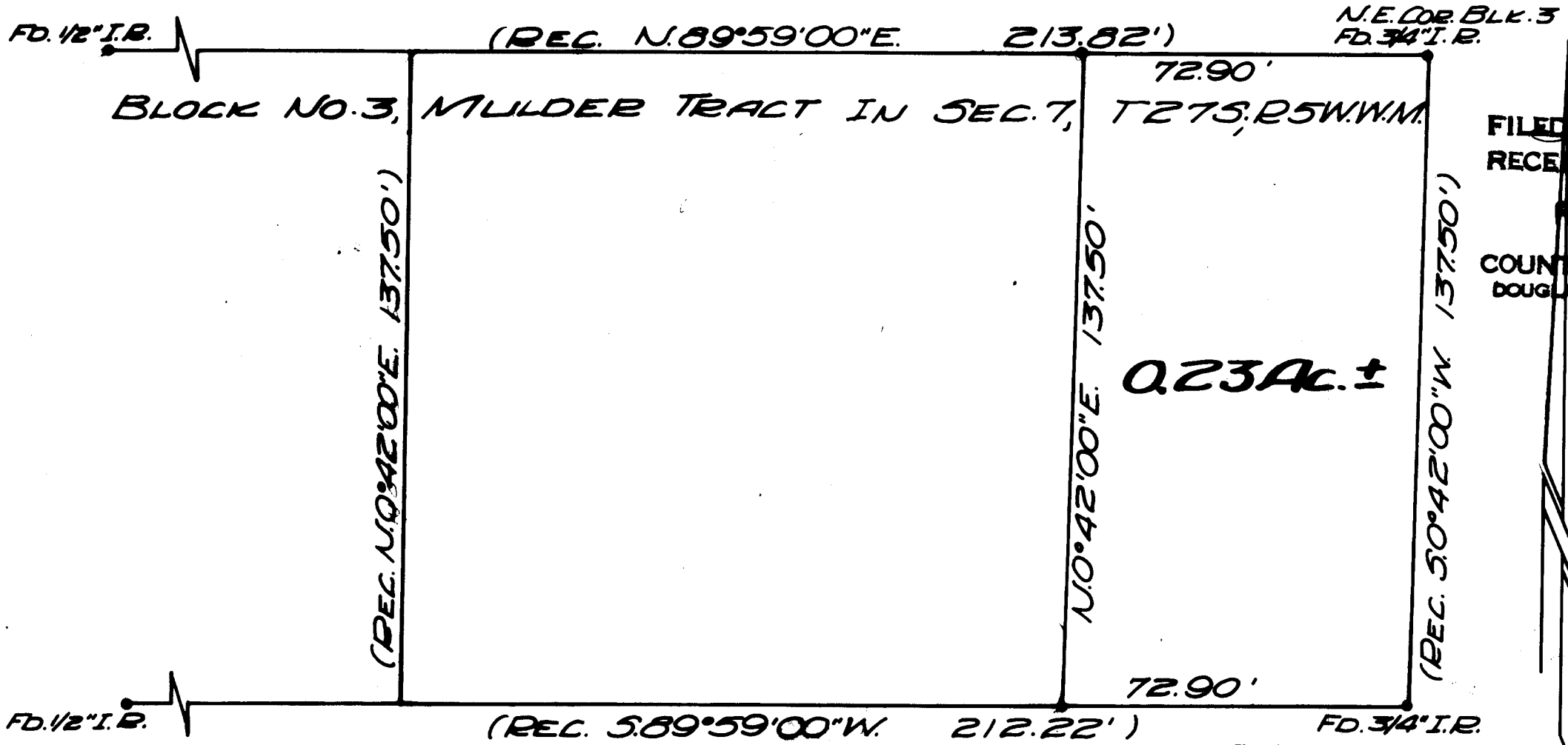


SURVEYED FOR DEED DESCRIPTION
LOCATED IN BLOCK NO. 3, MULDER TRACT
FOR MILDRED HORNSCHUCH
BY BAUGHMAN & ACKARET INC.

COUNTY SURVEYORS FILE DATA
DO NOT REMOVE FROM OFFICE



FILED
RECEIVED
FEB 21 1968
COUNTY SURVEYOR
DOUGLAS COUNTY, ORE.

LEGEND: CLOVER LANE

- SET 5/8" IRON ROD
- AS SHOWN

REGISTERED
OREGON
LAND SURVEYOR

Glenn S. Baughman

JULY 14, 1967
GLENN S. BAUGHMAN
536

T27-5 NW 1/4 7 P

C. S. File No. 55/107-1