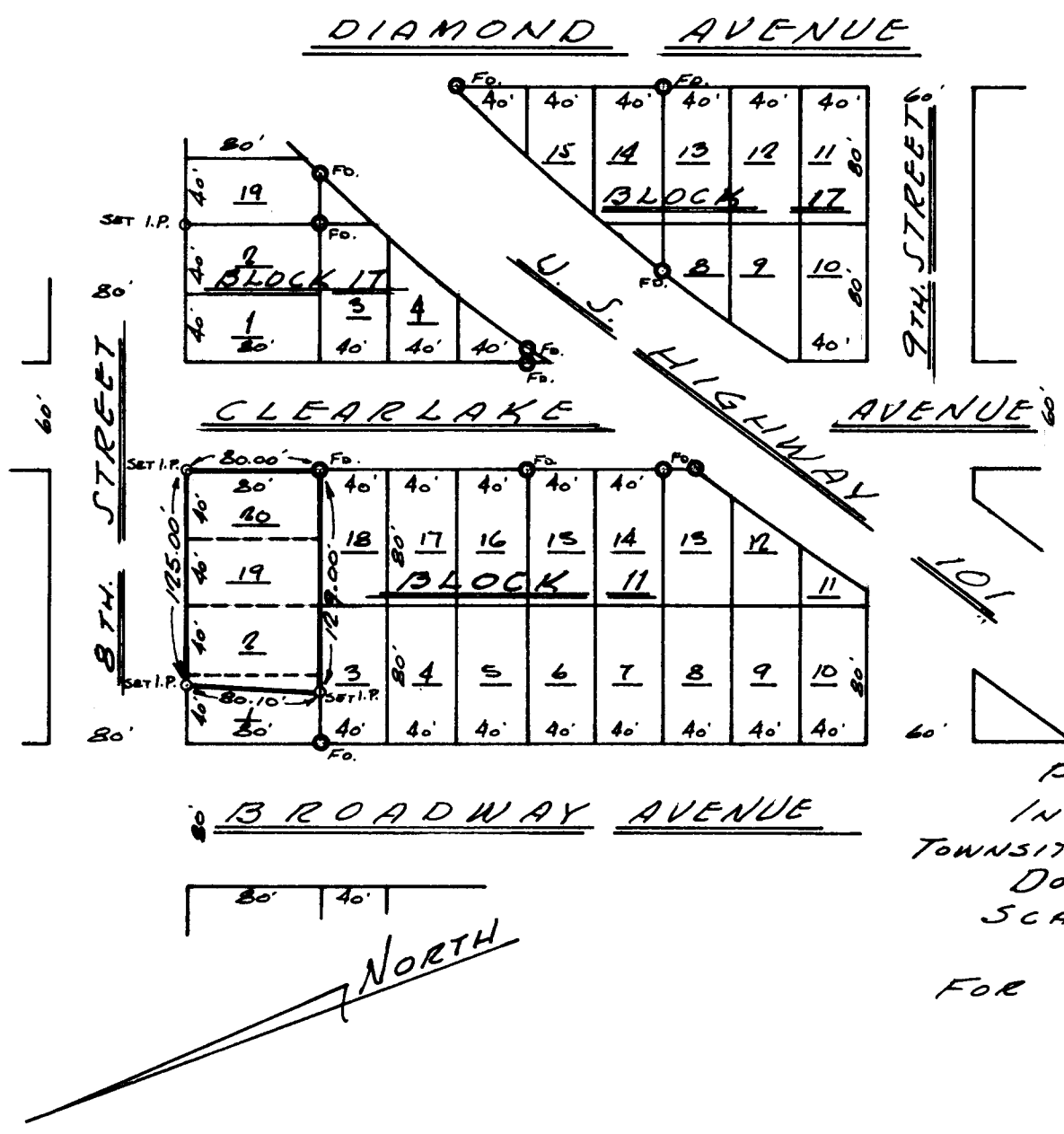


FILED
RECEIVED

OCT 26 1968

COUNTY SURVEYOR
DOUGLAS COUNTY, ORE.



REGISTERED
OREGON
LAND SURVEYOR

Robert W. Wade

OCTOBER 4, 1957
ROBERT W. WADE
433

**COUNTY SURVEYORS FILE DATA
DO NOT REMOVE FROM OFFICE**

T.22-12 SEC. 7
PROPERTY SURVEYS
IN BLOCKS 11 & 17,
TOWNSITE OF WINCHESTER BAY,
DOUGLAS COUNTY, OREGON
SCALE: 1" = 100' 10-9-68

FOR WALTER STONE &
RUSSELL HEDGES

A ■ HARLAN ■ GESSFORD
ARCHITECTS
5TH & HIGHLAND

E ■ ERICHSEN
ENGINEER
COOS BAY OREGON

C.S. File No. 55/96-1P