

COUNTY SURVEYORS FILE DATA
DO NOT REMOVE FROM OFFICE

SURVEY TO SET PROPERTY CORNERS
IN SEC. 17, T29S, R8W., W.M.
DOUGLAS COUNTY, ORE.

SURVEYED FOR - COMM. ACCEPTANCE CORP.
 SURVEYED BY -

OCT. 1968
 SCALE 1" = 40'

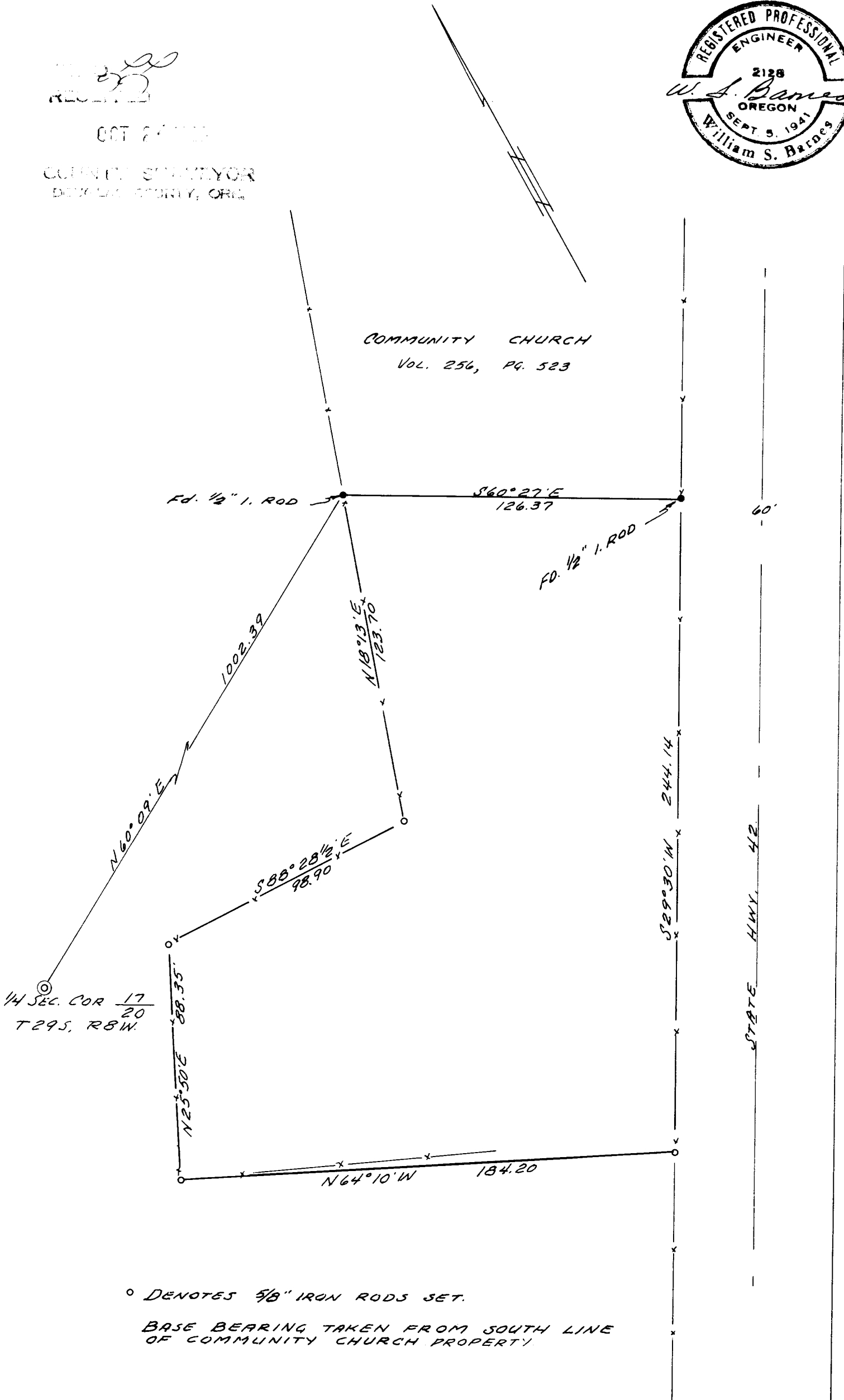
[Signature]
 RECEIVED

OCT 24 1968

COUNTY SURVEYOR
 DOUGLAS COUNTY, ORE.



COMMUNITY CHURCH
 Vol. 256, Pg. 523



° DENOTES 5/8" IRON RODS SET.
 BASE BEARING TAKEN FROM SOUTH LINE
 OF COMMUNITY CHURCH PROPERTY.