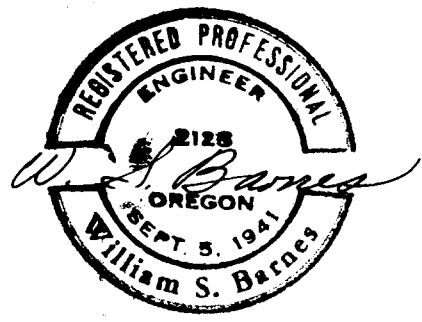
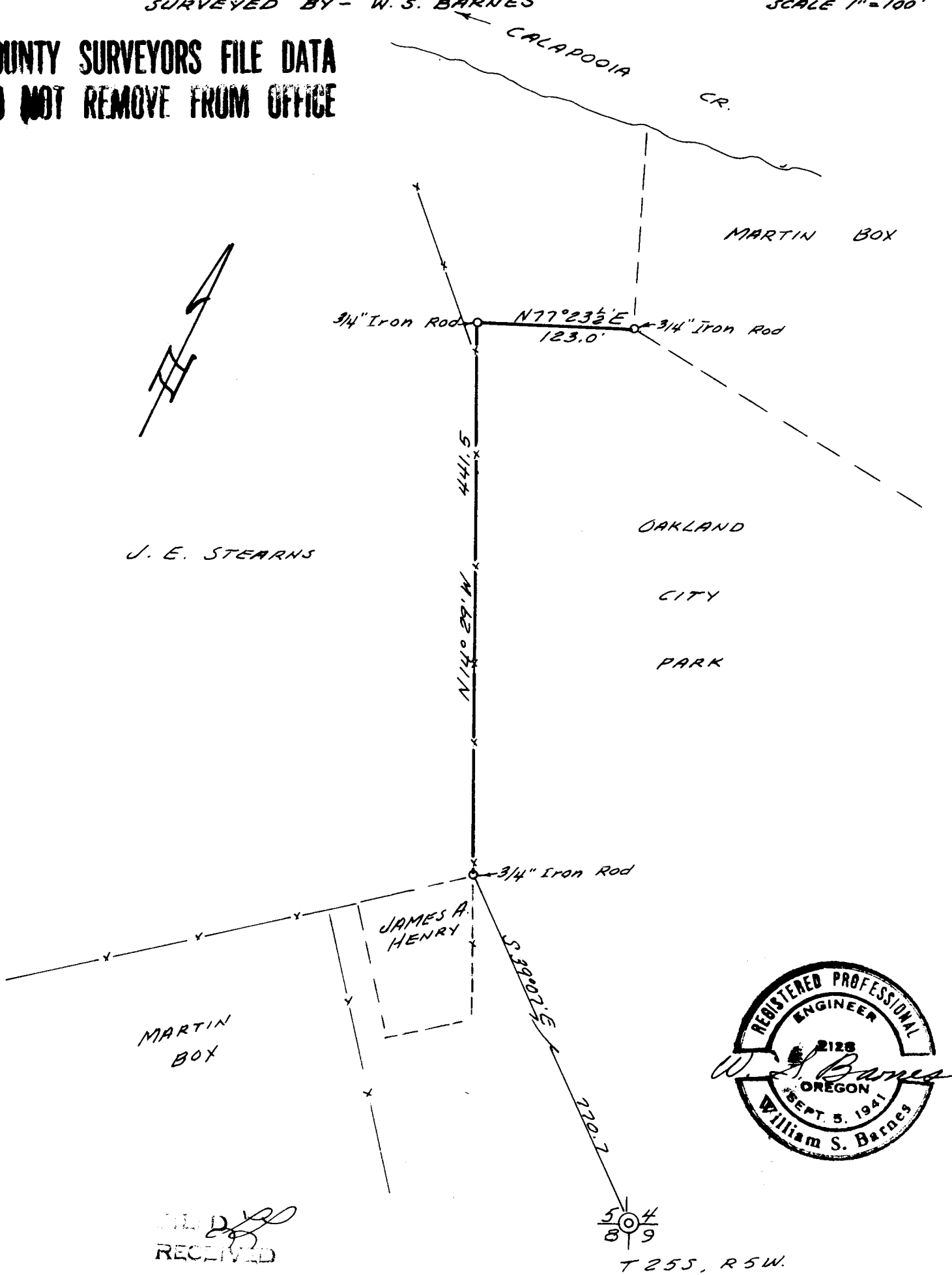


**SURVEY FOR QUIT CLAIM
IN SEC. 5, T 25 S, R 5 W. W.M.**

SURVEYED FOR - J. E. STEARNS
SURVEYED BY - W. S. BARNES

SEPT. 1968
SCALE 1" = 100'

**COUNTY SURVEYORS FILE DATA
DO NOT REMOVE FROM OFFICE**



FIELD RECEIVED

OCT 24 1968

COUNTY SURVEYOR
DOUGLAS COUNTY, ORE.