

SURVEY FOR DEED DESCRIPTION
IN SEC. 32, T. 25S., R. 6 W. W.M.
FOR DON ANDREWS OCT. 14, 1968
BY BAUGHMAN & ACKARET INC.

REGISTERED
 OREGON
 LAND SURVEYOR

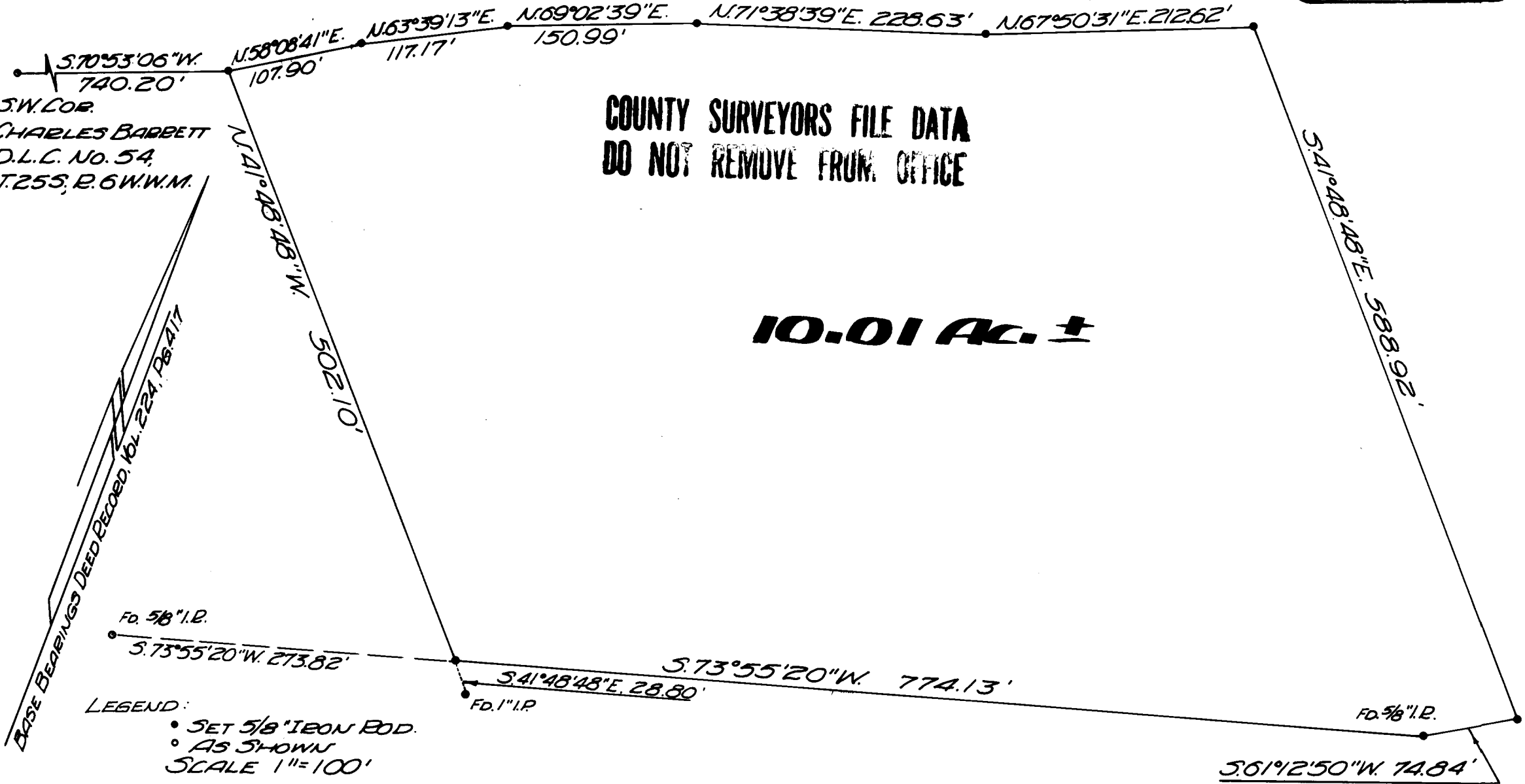
Glenn S. Baughman

JULY 14, 1961
 GLENN S. BAUGHMAN
 536

OCT 17 1968

COUNTY SURVEYOR
 DEUEL COUNTY, ORE.

COUNTY ROAD #32



COUNTY SURVEYORS FILE DATA
 DO NOT REMOVE FROM OFFICE

10.01 Ac. ±

S.W. COR.
 CHARLES BARBETT
 D.L.C. No. 54,
 T. 25S., R. 6 W. W.M.

BASE BEARINGS DEED RECORDED, VOL. 224, PG. 417

LEGEND:

- SET 5/8" IRON ROD.
 - AS SHOWN
- SCALE 1"=100'

55/93-1