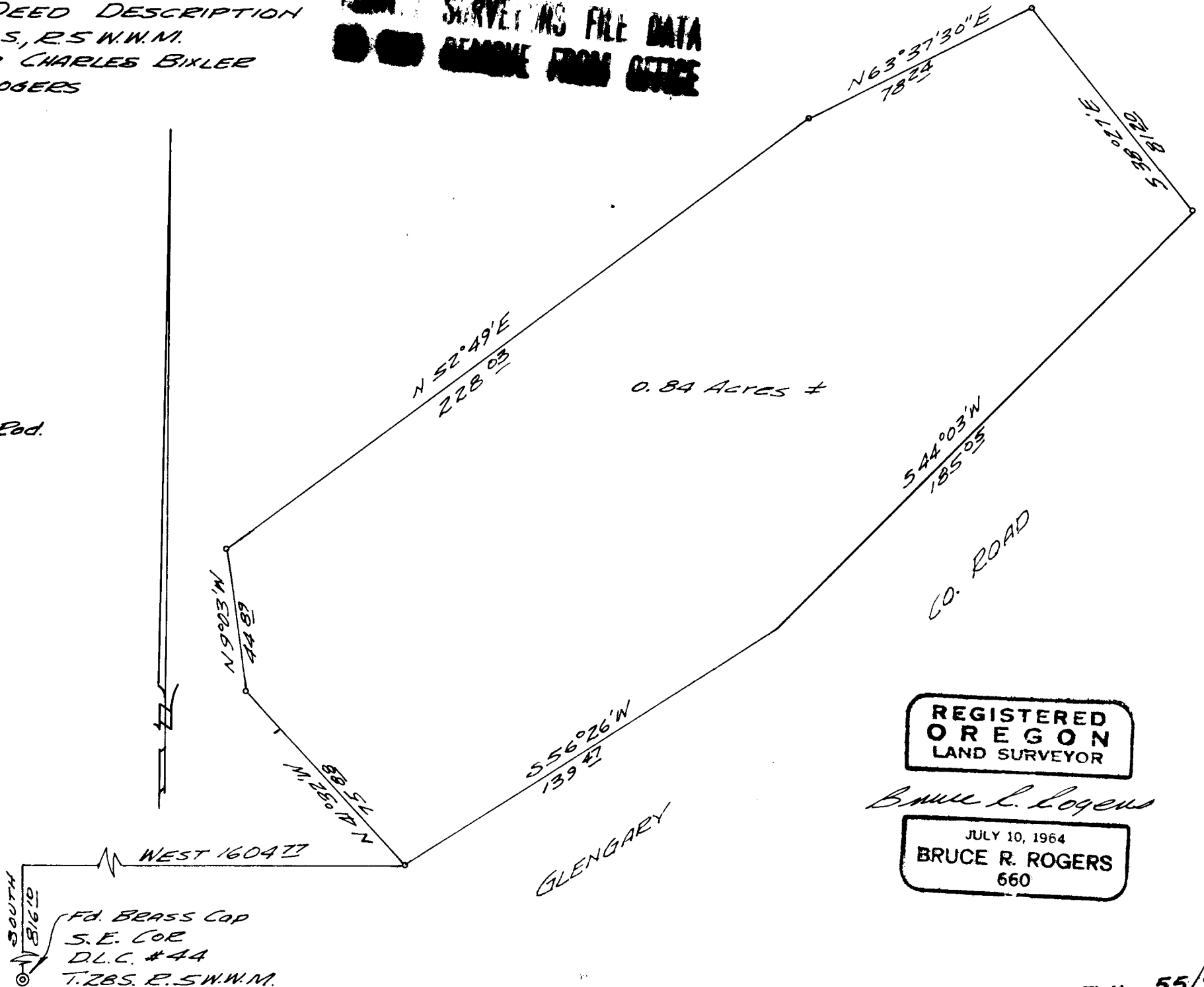


SURVEY FOR DEED DESCRIPTION
 IN SEC. 19, T.28S., R.5 W.W.M.
 SURVEYED FOR CHARLES BIXLER
 BY BRUCE R. ROGERS
 OCT. 10, 1968
 1" = 40'

COUNTY SURVEYING FILE DATA
 REMOVE FROM OFFICE

o - set 5/8" Iron Rod.



REGISTERED
 OREGON
 LAND SURVEYOR

Bruce R. Rogers

JULY 10, 1964
 BRUCE R. ROGERS
 660

DEC 2 1968
 COUNTY SURVEYOR
 T.28S. E.5 W.W.M.