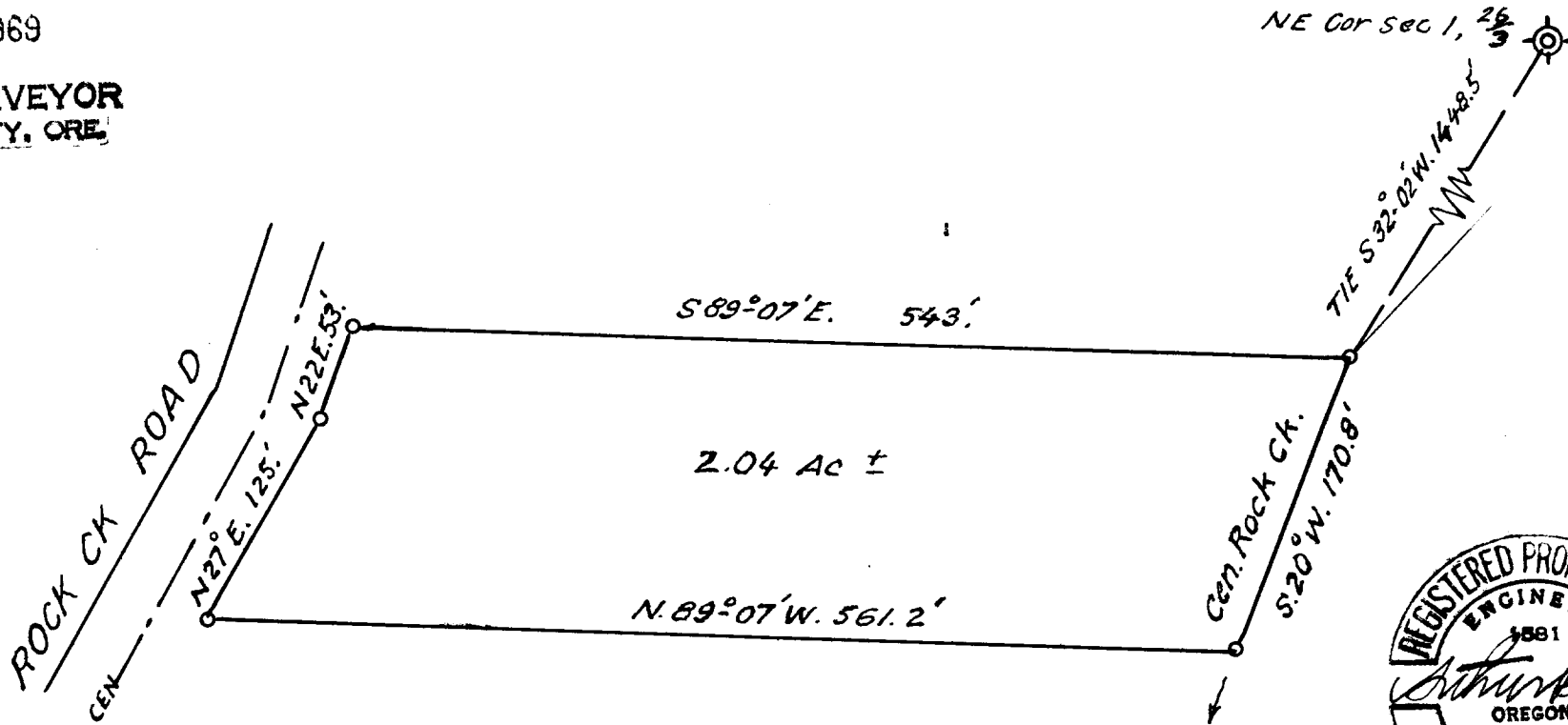


FILED
RECEIVED

DEC 19 1969

COUNTY SURVEYOR
DOUGLAS COUNTY, ORE.



COUNTY SURVEYORS FILE DATA
DO NOT REMOVE FROM OFFICE

KENNETH OVERTON
ROCK CREEK

ACREAGE IN SEC. 1, T26S; R 3W; WIL. MER.
BET. EXISTING CO. ROAD & GEN. ROCK CK.
DOUGLAS COUNTY, ORE.

To void map filed Dec. 10 '69

DEC. 1969

1" = 100'

ARTHUR BOYER
Roseburg, Oregon

**COUNTY SURVEYORS FILE DATA
DO NOT REMOVE FROM OFFICE**

Kenneth Overton,
Rock Creek

Beginning at a point which is S.32°02'W. ^{1448.5}~~1048.5~~ ft.
from the N.E. corner of Sec. 1, T. 26 S; R. 3 W; W.M;
and running thence S.20°W. 170.8 ft; along the center of Rock
Creek, down stream, to a point, thence N.89°07'W. 561.2 ft.
to a 2" iron pipe on the east line of the present travelled
road, thence N.27°E. 125.0 ft. and N.22°E. 53.0 ft. along
said east road line, 30 ft. out from the center of said
road, to a 2" iron pipe, thence S.89°07'E. 543.0 ft. to
the place of beginning, containing 2.04 acres, more or less
and situated in Sec. 1, T. 26 S; R. 3 W; W.M; Douglas County,
Oregon.

A.B.
Dec. 1969

To void previous description.

FILED
RECEIVED

DEC 19 1969

COUNTY SURVEYOR
DOUGLAS COUNTY, ORE.

55/88-4b