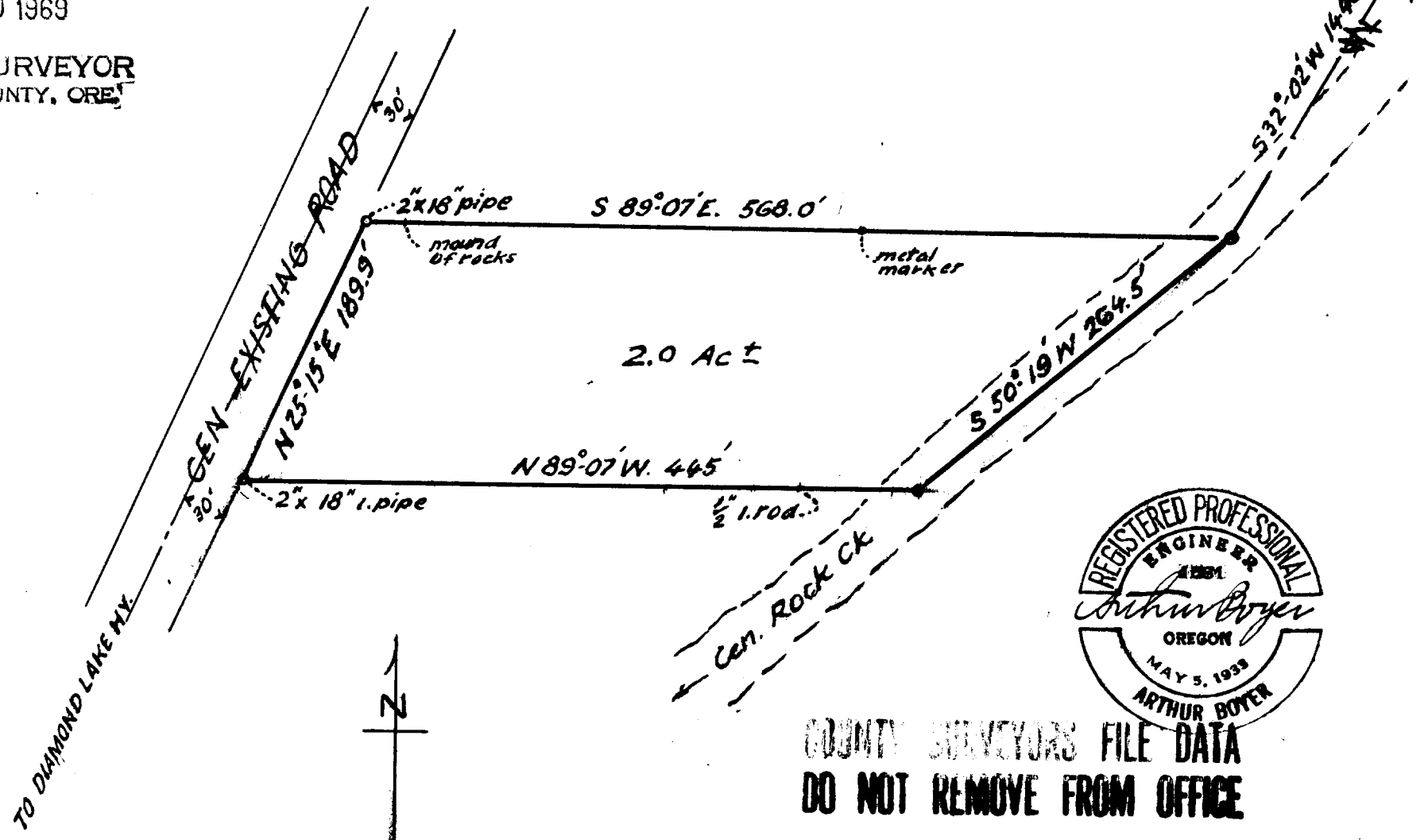


FILED *LL*
RECEIVED

DEC 10 1969

COUNTY SURVEYOR
DOUGLAS COUNTY, ORE.

NE Cor
Sec. 1 26/3



COUNTY SURVEYORS FILE DATA
DO NOT REMOVE FROM OFFICE

KENNETH OVERTON
ROCK CREEK
ACREAGE IN SEC. 1, T26S; R.3W; W.M.;
BET. EXISTING ROAD & GEN. ROCK CK.
DOUGLAS COUNTY, ORE.
DEC. 1969. 1" = 100'

VOID
SEE MAP DATED
DEC. 19, 1969