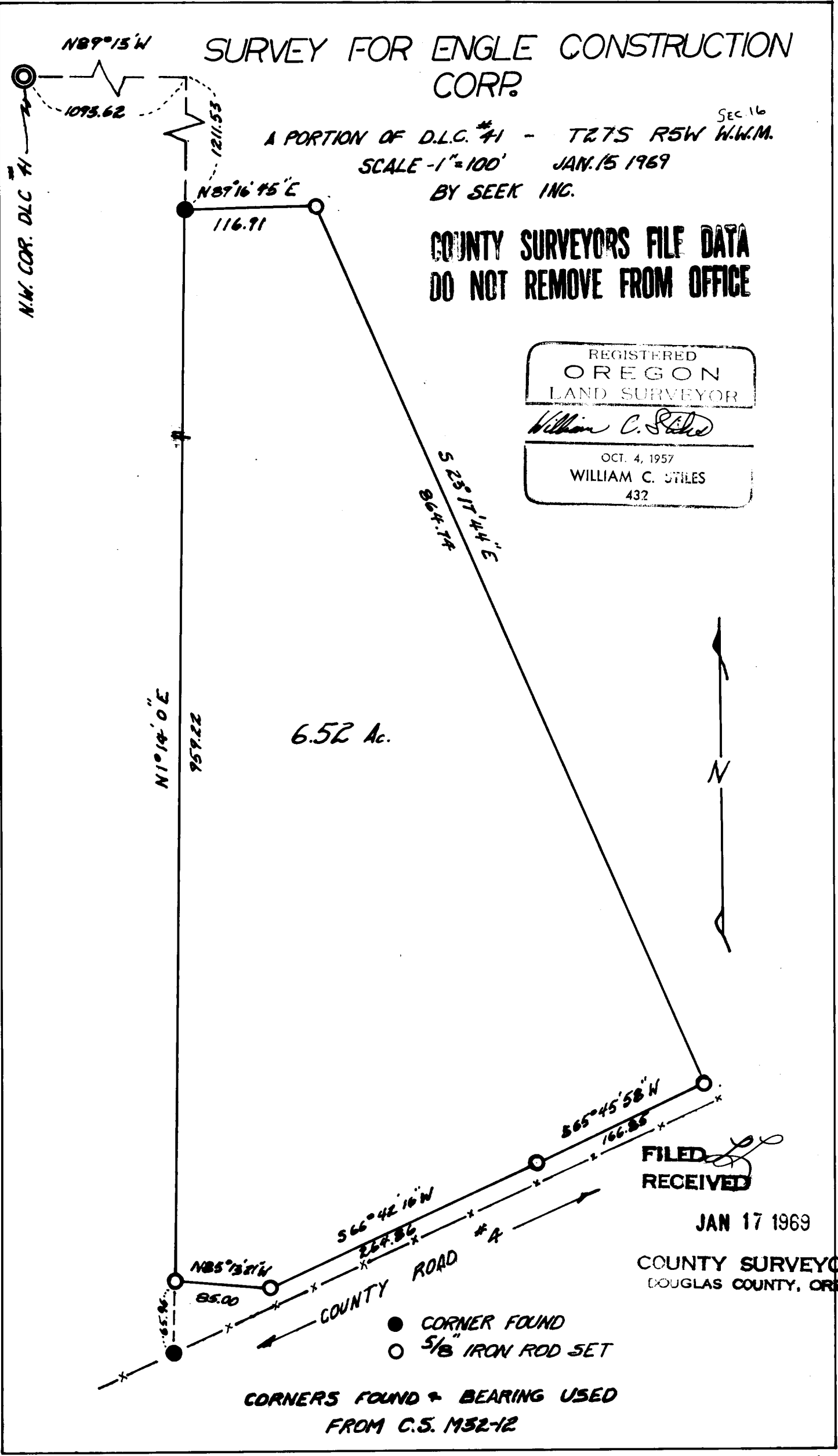


SURVEY FOR ENGLE CONSTRUCTION CORP.

A PORTION OF D.L.C. #41 - T27S R5W W.W.M. SEC. 16
 SCALE - 1" = 100' JAN. 15 1969
 BY SEEK INC.

**COUNTY SURVEYORS FILE DATA
 DO NOT REMOVE FROM OFFICE**

REGISTERED
 OREGON
 LAND SURVEYOR
William C. Stiles
 OCT. 4, 1957
 WILLIAM C. STILES
 432



FILED
RECEIVED

JAN 17 1969

COUNTY SURVEYOR
 DOUGLAS COUNTY, ORE.

- CORNER FOUND
- 5/8" IRON ROD SET

CORNERS FOUND & BEARING USED
 FROM C.S. M32-12