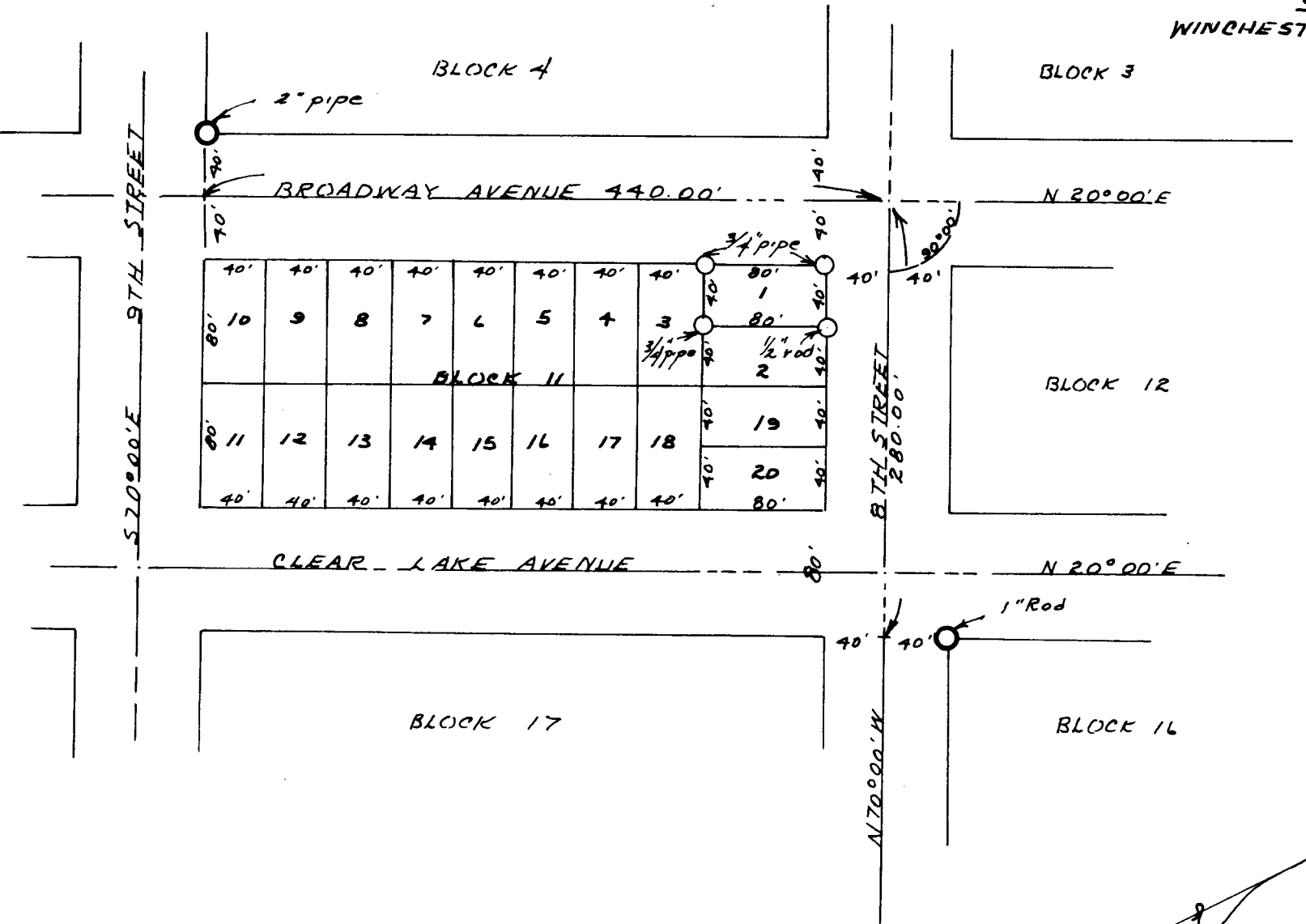


**COUNTY SURVEYORS FILE DATA  
DO NOT REMOVE FROM OFFICE**

T. 22 S. R. 12 W. SEC. 7  
SURVEY OF LOT 1, BLOCK 11,  
WINCHESTER BAY TOWNSITE, DOUGLAS CO., ORE.

for  
HENRY M. BUCK



Corners set: ○  
 Corners found: ○  
 Basis for bearing: Existing Monuments  
 Record bearings  
 May 6, 1968

REGISTERED  
**OREGON**  
 LAND SURVEYOR  
*Warren D. Hootman*  
 MAY 10, 1968  
 WARREN D. HOOTMAN  
 399

FILED  
 RECEIVED

JUL 3 1968

COUNTY SURVEYOR  
 DOUGLAS COUNTY, ORE.

North  
 Scale: 1" = 100'