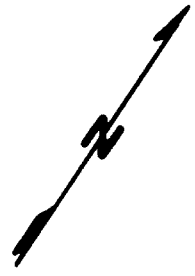
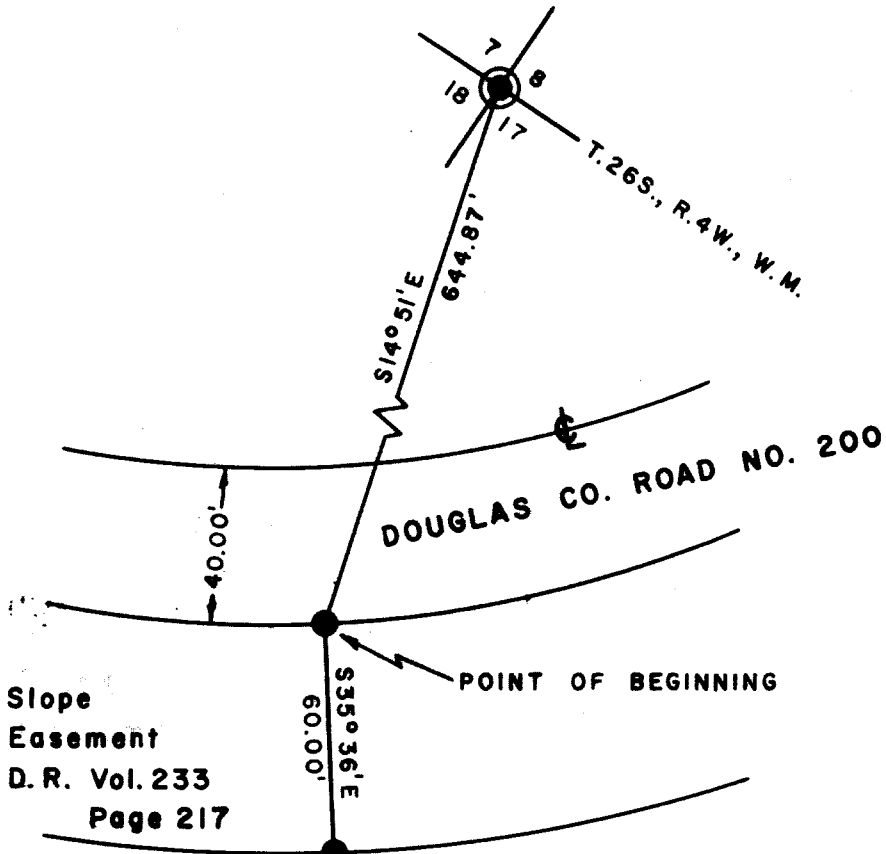


FILED *JS*
RECEIVED

JUL 15 1968

COUNTY SURVEYOR
DOUGLAS COUNTY, ORE.



LEGEND

- ⊙ Corner Found
- Corner Set (5/8" Iron Rod)

**COUNTY SURVEYORS FILE DATA
DO NOT REMOVE FROM OFFICE**

REGISTERED
OREGON
LAND SURVEYOR

BA Shaner

OCT. 4, 1967
Bruce A. Shaner
ES

PROPERTY LINE SURVEY
for JIM BEVANS
in the NW1/4 NW1/4 of Sec. 17,
T.26S., R.4W., W.M.

June 24, 1968
BRUCE A. SHANER, Engineer

