

FILED *[Signature]*
RECEIVED

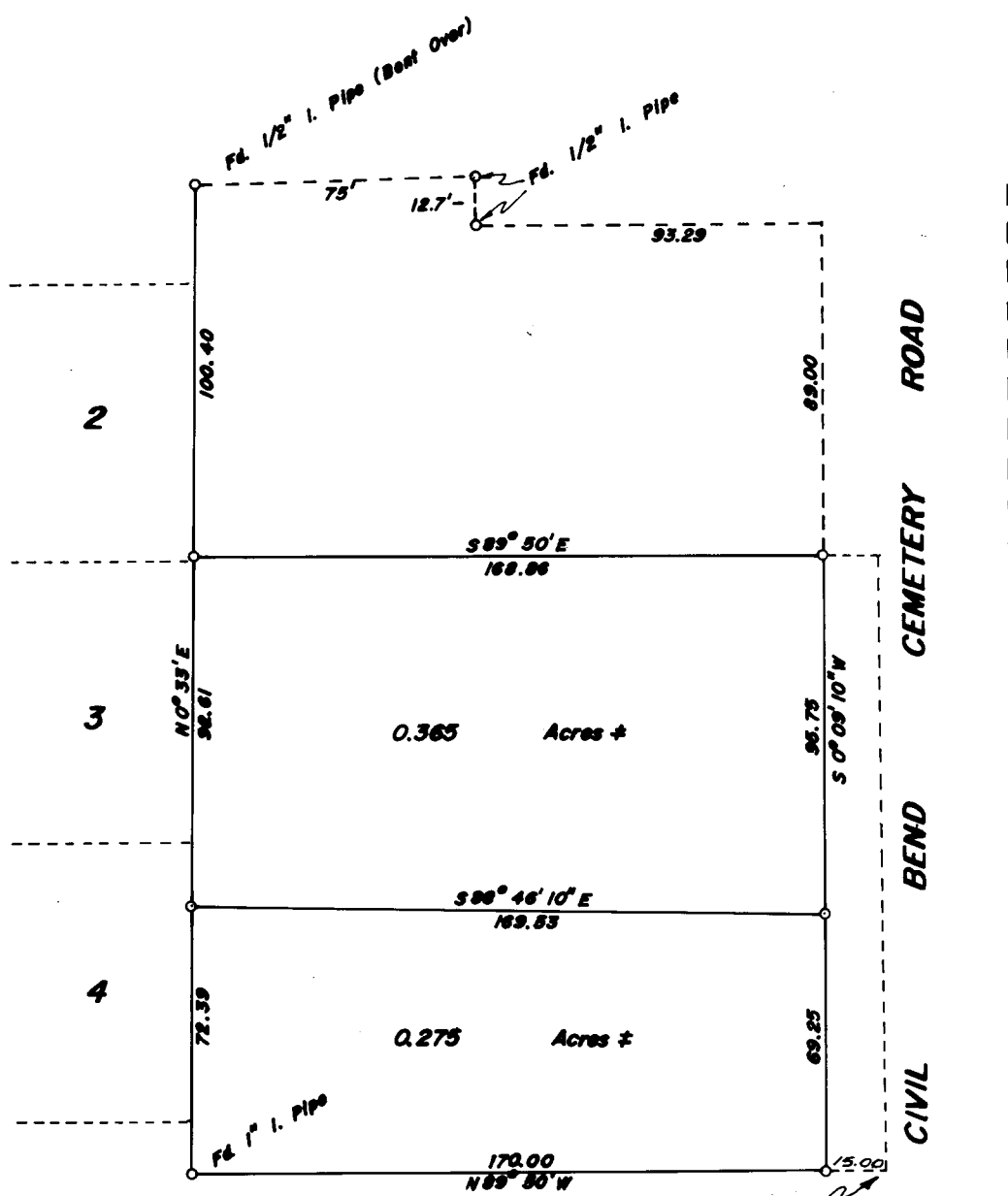
SEP 13 1968

COUNTY SURVEYOR
DOUGLAS COUNTY, ORE.

COUNTY SURVEYORS FILE DATA
DO NOT REMOVE FROM OFFICE

SURVEY IN SECT. 21, TWP 28 SOUTH, RNG. 6 WEST, W.M.
LOT 14, GLEN D. HART TRACTS
Surveyed for Eileen McKay by Don E. Garrett
September 1968 Scale 1" = 50'
o - Set 5/8" Iron Rod
Bearings are based on the West Line of Property Surveyed. C.S. File 42/89

ILLINOIS
BLOCK 3
HEIGHTS



Southeast Corner Lot 14
Glen D. Hart Tracts

REGISTERED
OREGON
LAND SURVEYOR

Don E. Garrett
JULY 14, 1961
DON E. GARRETT
544