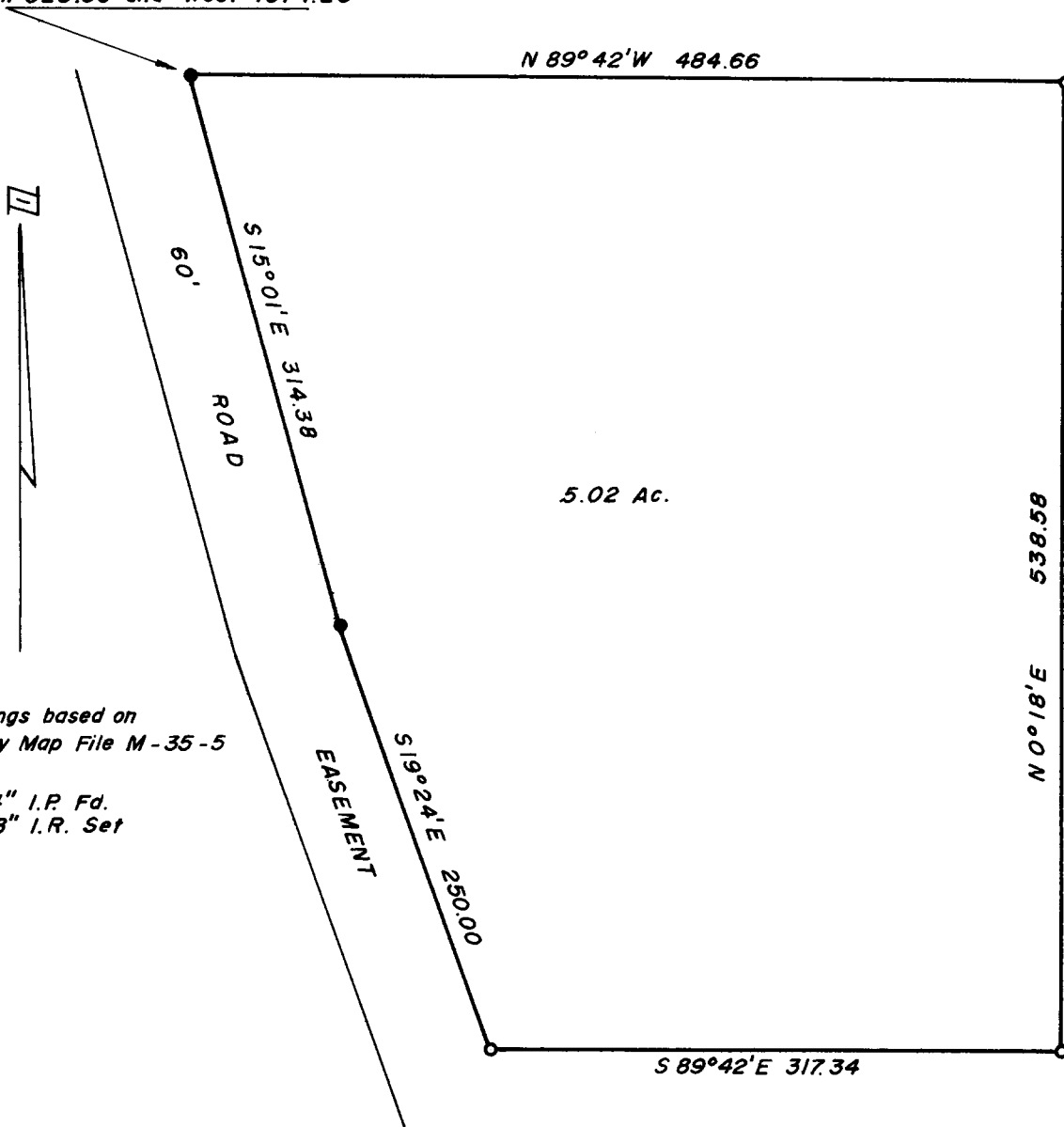


FILED  
RECEIVED

MAY 23 1968

COUNTY SURVEYOR  
DOUGLAS COUNTY, ORE.

Initial Point  
SW Cor. Sec. 6, T. 28 S., R. 6 W., W.M. bears  
South 929.36 and West 1874.26



Bearings based on  
County Map File M-35-5

- 3/4" I.P. Fd.
- 5/8" I.R. Set

SURVEY IN SEC. 6, T. 28 S., R. 6 W., W.M.  
SURVEYED FOR OTIS HELMAN  
SURVEYED BY R. H. GEE  
APRIL, 1968 - SCALE 1" = 100'



COUNTY SURVEYORS FILE DATA  
DO NOT REMOVE FROM OFFICE

C. S. File No. 55/75