

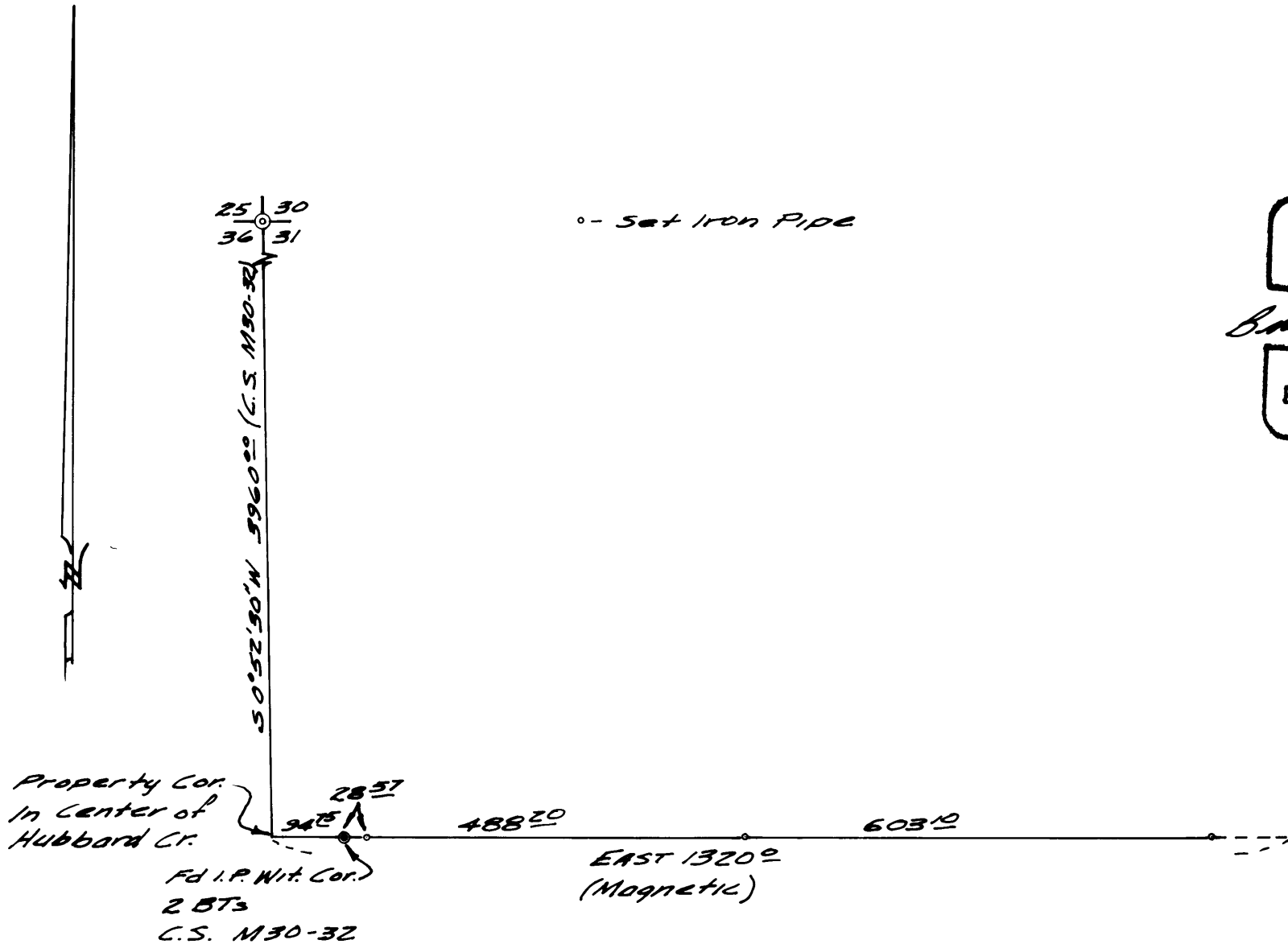
SURVEY FOR DEED DESCRIPTION
 IN SEC 31, T. 25S., R. 7W. N.M.
 SURVEYED FOR CHAS. R. BRIGGS
 BY BRUCE R. ROGERS
 JUNE 12, 1968
 1" = 100'
 200'

COUNTY SURVEYORS FILE DATA
 DO NOT REMOVE FROM OFFICE

FILED
 RECEIVED

JUN 13 1968

COUNTY SURVEYOR
 DOUGLAS COUNTY, ORE.



REGISTERED
 OREGON
 LAND SURVEYOR

Bruce R. Rogers

JULY 10, 1968
 BRUCE R. ROGERS
 660