

# SURVEYED FOR DEED DESCRIPTION

LOCATED IN SEC. 13, TWP 22 S., R6.10 W. W.M.

SURVEYED FOR HARRY IRVINE

BY BAUGHMAN & ACKERET INC. 5-5-70

SCALE 1"=50'

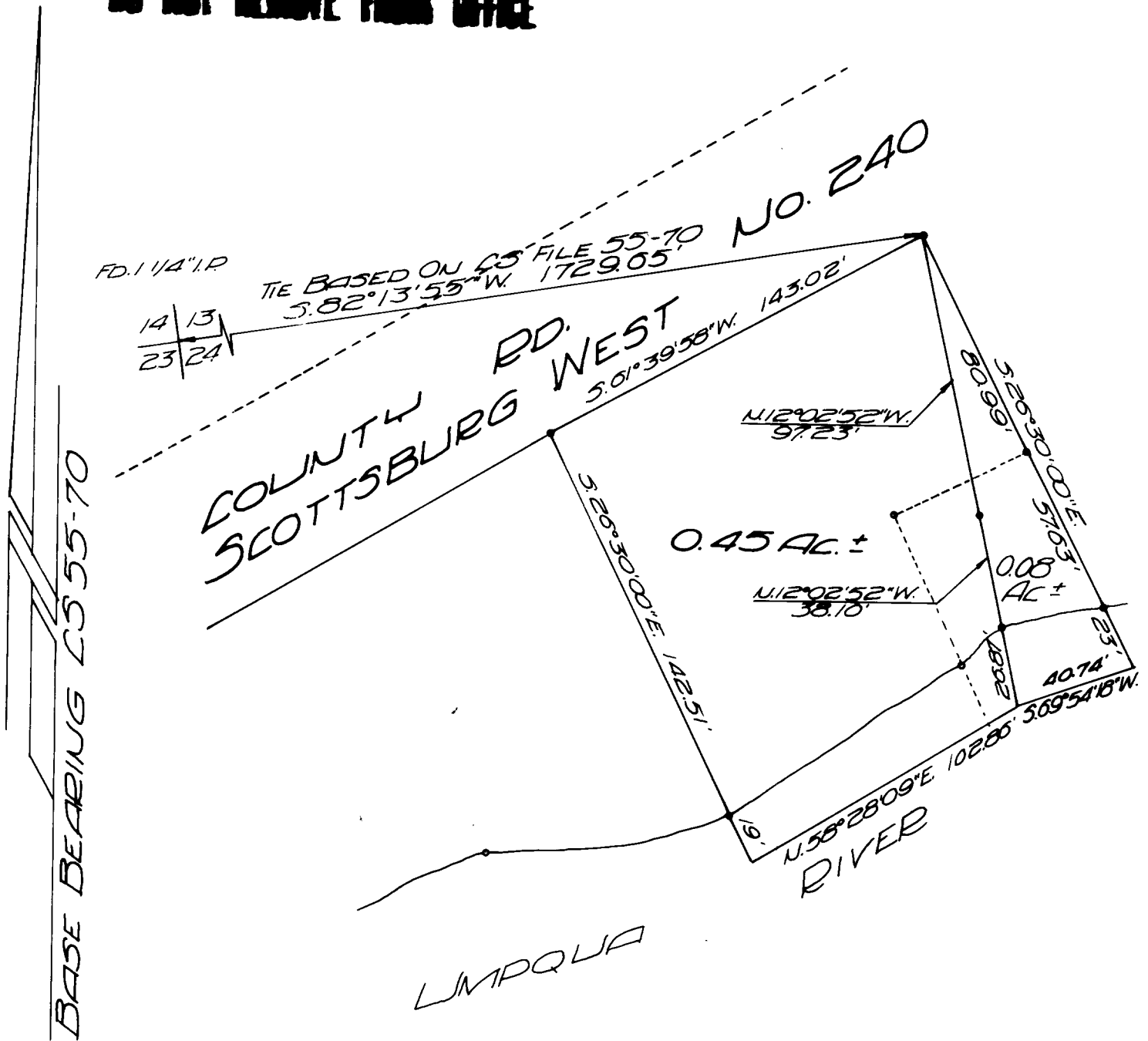
- SET 5/8" IRON ROD
- FD. 5/8" IRON ROD
- PER C.S. 55-70

REGISTERED  
OREGON  
LAND SURVEYOR

*Glenn S. Baughman*

JULY 14, 1961  
GLENN S. BAUGHMAN  
536

**COUNTY SURVEYORS FILE DATA  
DO NOT REMOVE FROM OFFICE**



FILED *[Signature]*  
RECEIVED

MAY 1961

COUNTY SURVEYORS  
BOARD OF COUNTY COMMISSIONERS