

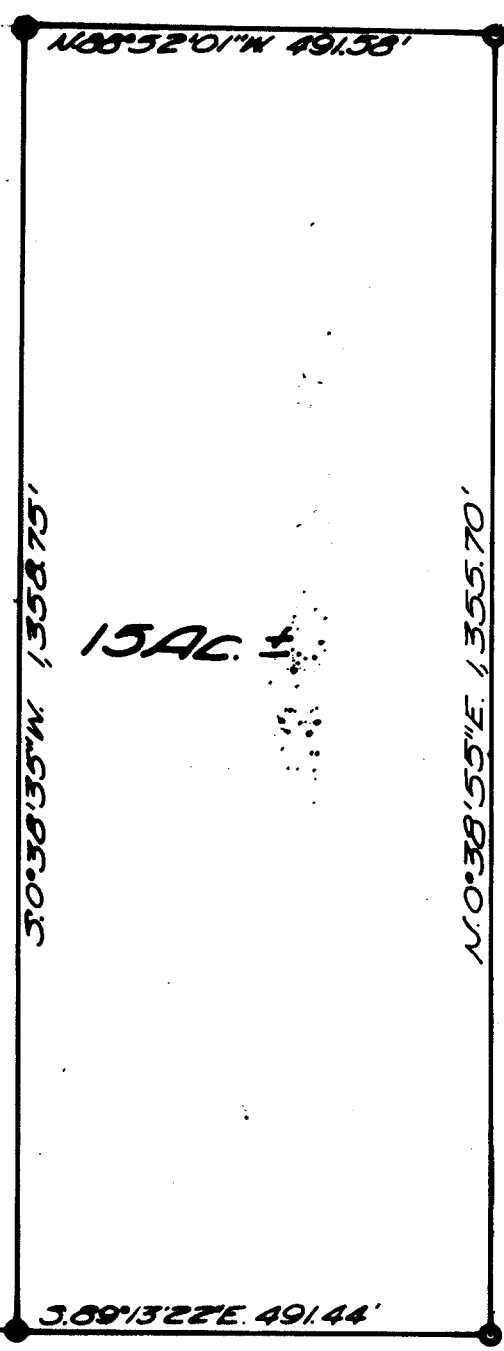
**SURVEY FOR L. H. OLINGHOUSE**  
**LOCATED IN SEC. 5 T. 32 S., R. 4 W. W.M.**  
**BY BAUGHMAN & ACKERET INC.**  
**SCALE 1" = 200'                      MARCH 14, 1968**

REGISTERED  
 OREGON  
 LAND SURVEYOR

*Glenn S. Baughman*

JULY 14, 1961  
 GLENN S. BAUGHMAN  
 536

COUNTY SURVEYORS FILE DATA  
 DO NOT REMOVE FROM OFFICE



15 AC ±

BASE OF BEARING M 22-02

FD. 1/2" I.E.  
 N89°15'48\"/>

S. 89°13'22\"/>

1/4 COR SEC. 5  
 T. 32 S., R. 4 W. W.M.

S. 20\"/>

LEGEND:  
 FD. 1/4\"/>

*[Signature]*  
 REGISTERED

APR 8 1968

COUNTY SURVEYOR  
 DOUGLAS COUNTY, ORE.

FD. 5/8\"/>

C.S. File No. 55/70