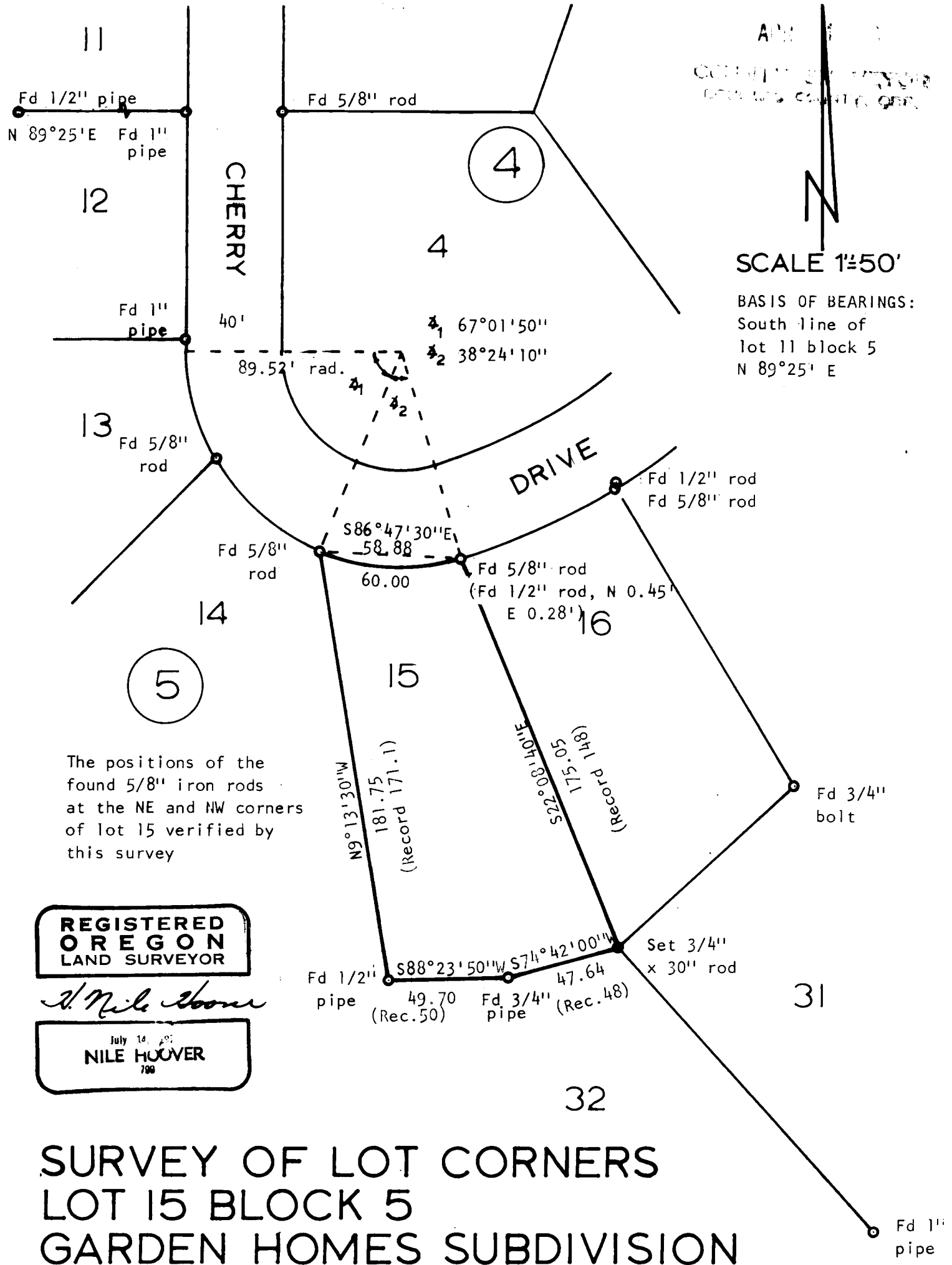


REC'D
 APR 11 1968
 COUNTY SURVEYORS
 OFFICE CLATSOP COUNTY, ORE.



**REGISTERED
 OREGON
 LAND SURVEYOR**

H. Nile Hoover

July 14, 1968
NILE HOOVER
 798

**SURVEY OF LOT CORNERS
 LOT 15 BLOCK 5
 GARDEN HOMES SUBDIVISION**

SECTION 14, T 27 S, R6W, WM
 for: MR. K.L. WALDRON
 by: H. NILE HOOVER, L.S.
 MARCH, 1968

**COUNTY SURVEYORS FILE DATA
 DO NOT REMOVE FROM OFFICE**

**COUNTY SURVEYORS FILE DATA
DO NOT REMOVE FROM OFFICE**

Survey no. - 55/69

Survey Narrative to comply with paragraph 209.250
revised by chapter 555, O.L. 1963

SURVEY FOR: Mr. K.L. Waldron

PROPERTY: Lot 15, Block 5, Garden Homes Subdivision in Section 14,
Township 27 South, Range 6 West, Willamette Meridian,
Douglas County, Oregon

PROCEDURE: The location of original and reestablished corners in
the subdivision were determined by random line and ties.
Due to a lack of plat information and the fact that many
original corners had been destroyed, the reestablishment
of the corners of lot 15 from original data was impossible.
However, there was adequate information and sufficient
remaining original corners to verify the adequacy and accu-
racy of Mr. Garrett's Minor Land Partitioning of lot 4,
block 4 dated May 9, 1964. Using the south line of lot 11,
block 5, (as did Mr. Garrett) as the basis of bearings
and the distance established by him it was determined that
the 5/8" iron rods at the NE and NW corners of lot 15,
block 5 were within acceptable tolerances.

At the SW corner and at the angle point on the south
line of lot 15 original iron pipes were found. By proport-
ioning the distances found between the angle point on the
south line of lot 15 and the SE corner of lot 16, the
easterly distance from the angle point was determined.
However, the plat had an obvious error of approximately
27 feet in the distances from the NE corner of lot 15 to
the SE corner of lot 32. Carefull study of the plat and
of the intent indicated without doubt for the easterly
line of lot 32 to be 160 feet with the balance of the dist-
ance between the NE corner of lot 15 and the SE corner of
lot 32 being along the east line of lot 15. Therefore, the
SE corner of lot 15 was set N 74°42' E 47.64 feet from the
angle point on the south line and 160 feet from the SE
corner of lot 32.

March, 1968

H.N. Hoover

H.N. Hoover,
Registered Oregon Land Surveyor
799

[Handwritten signature]

APR 1 1968

COUNTY SURVEYOR
DOUGLAS COUNTY, OREGON

C. S. File No. 55/69 b