

FILED
RECEIVED

MAR 4 1968

COUNTY SURVEYOR
DOUGLAS COUNTY, ORE.

PROPERTY SURVEY

FOR

WILLARD C. AYRES

Located in

Section 18, T26S, R4W, W. M., Douglas County, Oregon

R4W
T26S

18 17

WHISTLERS BEND PARK

COUNTY SURVEYORS FILE DATA
DO NOT REMOVE FROM OFFICE

Scale: 1" = 200'

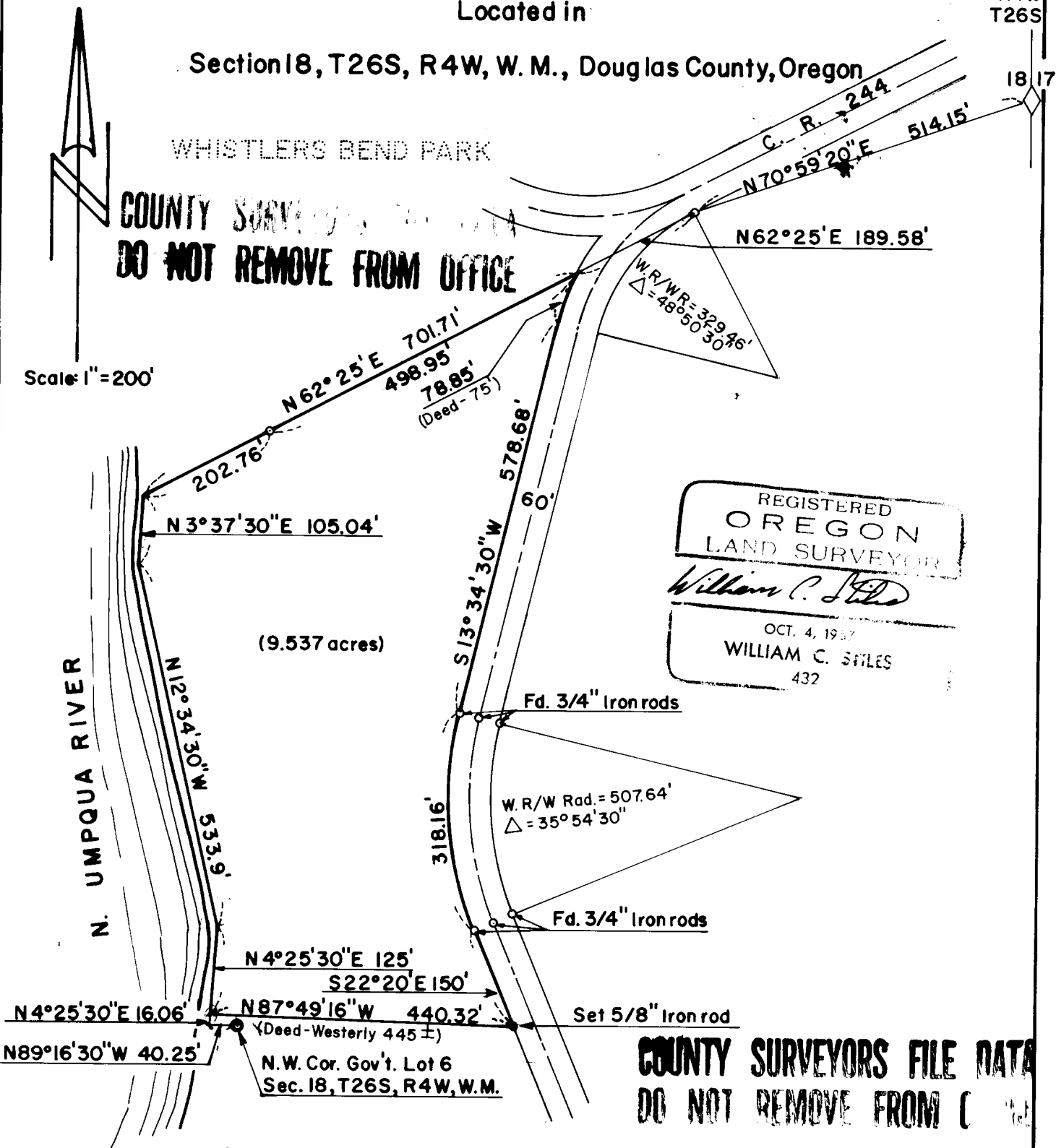
N. UMPQUA RIVER

(9.537 acres)

REGISTERED
OREGON
LAND SURVEYOR

William C. Styles

OCT. 4, 1957
WILLIAM C. STYLES
432



N4°25'30"E 16.06'
N89°16'30"W 40.25'

N4°25'30"E 125'
S22°20'E 150'
N87°49'16"W 440.32'
(Deed - Westerly 445 ±)
N.W. Cor. Gov't. Lot 6
Sec. 18, T26S, R4W, W.M.

COUNTY SURVEYORS FILE DATA
DO NOT REMOVE FROM OFFICE

Surveyed by SEEK, Inc.

February 21, 1968