

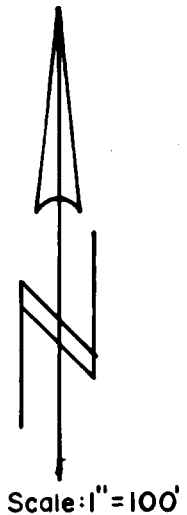
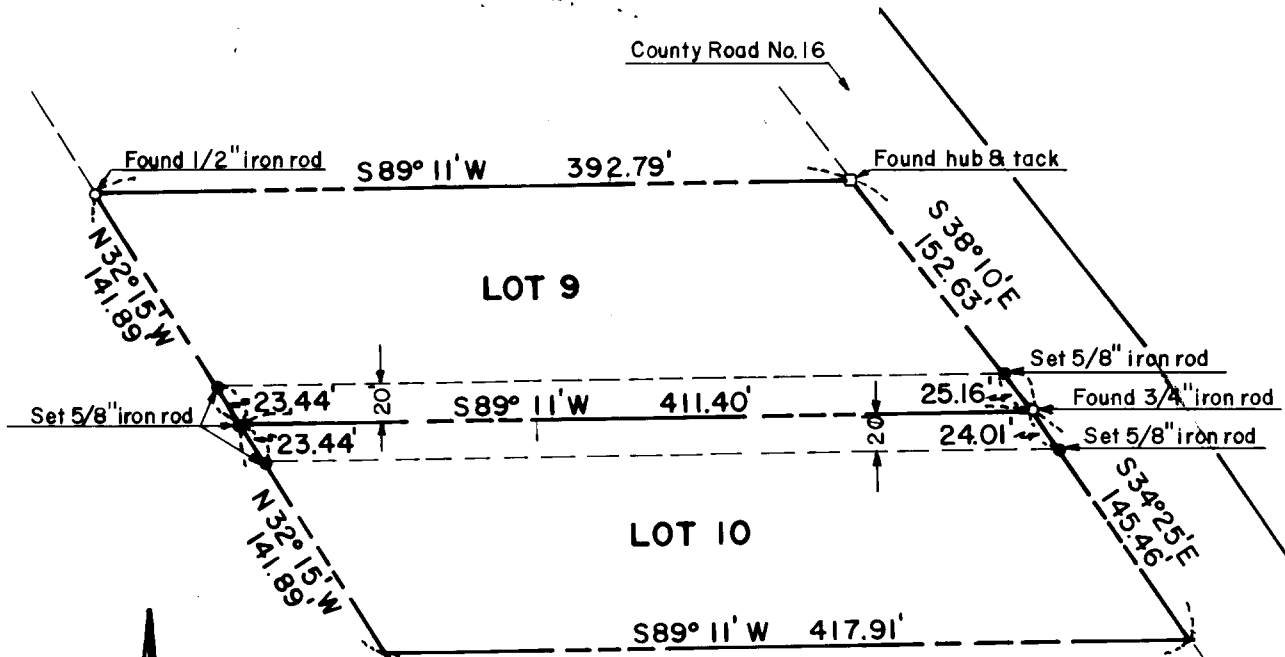
COUNTY SURVEYORS FILE DATA
DO NOT REMOVE FROM OFFICE

PROPERTY SURVEY

FOR

JAMES TRAVIS

Part of Lots 9 & 10, PEARL SUBDIVISION
Section 14, T28S, R6W, W. M., Douglas County, Oregon



REGISTERED
OREGON
LAND SURVEYOR
William C. Stiles
OCT. 4, 1957
WILLIAM C. STILES
432

FILED
RECEIVED

MAR 4 1968

COUNTY SURVEYOR
DOUGLAS COUNTY, ORE.

Surveyed by SEEK, Inc. January 25, 1968