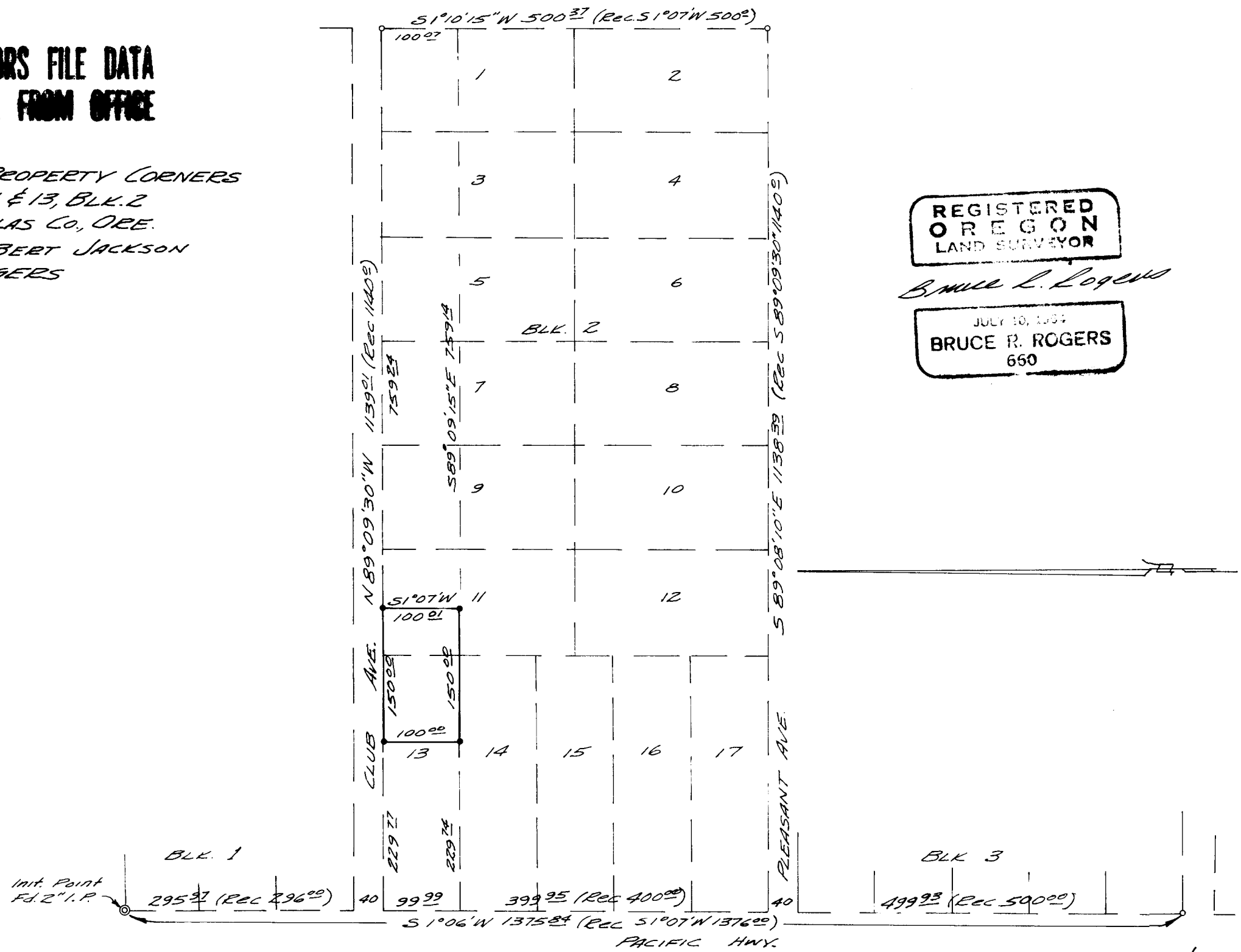


**COUNTY SURVEYORS FILE DATA
DO NOT REMOVE FROM OFFICE**

*SURVEY TO SET PROPERTY CORNERS
PART OF LOTS 11 & 13, BLK. 2
FAIRACRES, DOUGLAS Co., ORE.
SURVEYED FOR BERT JACKSON
by BRUCE R. ROGERS
JAN., 1968
1" = 150'*

- *Fd. 3/4" I.P.*
- *set. 5/8" I.P.*

LL



REGISTERED
OREGON
LAND SURVEYOR

Bruce R. Rogers

JULY 10, 1964
BRUCE R. ROGERS
650