

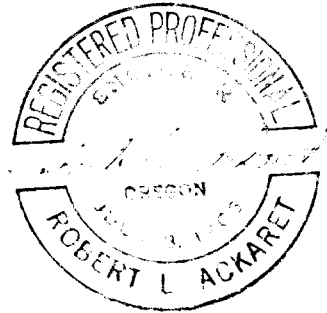
COUNTY SURVEYORS FILE DATA
DO NOT REMOVE FROM OFFICE

SURVEY TO ESTABLISH PROPERTY COR.
IN LOT NO. 13 & 14, BLOCK NO. 2, PLAT "D"
SUTHERLIN LAND & WATER COMPANY
BY BAUGHMAN & ACKARET INC.

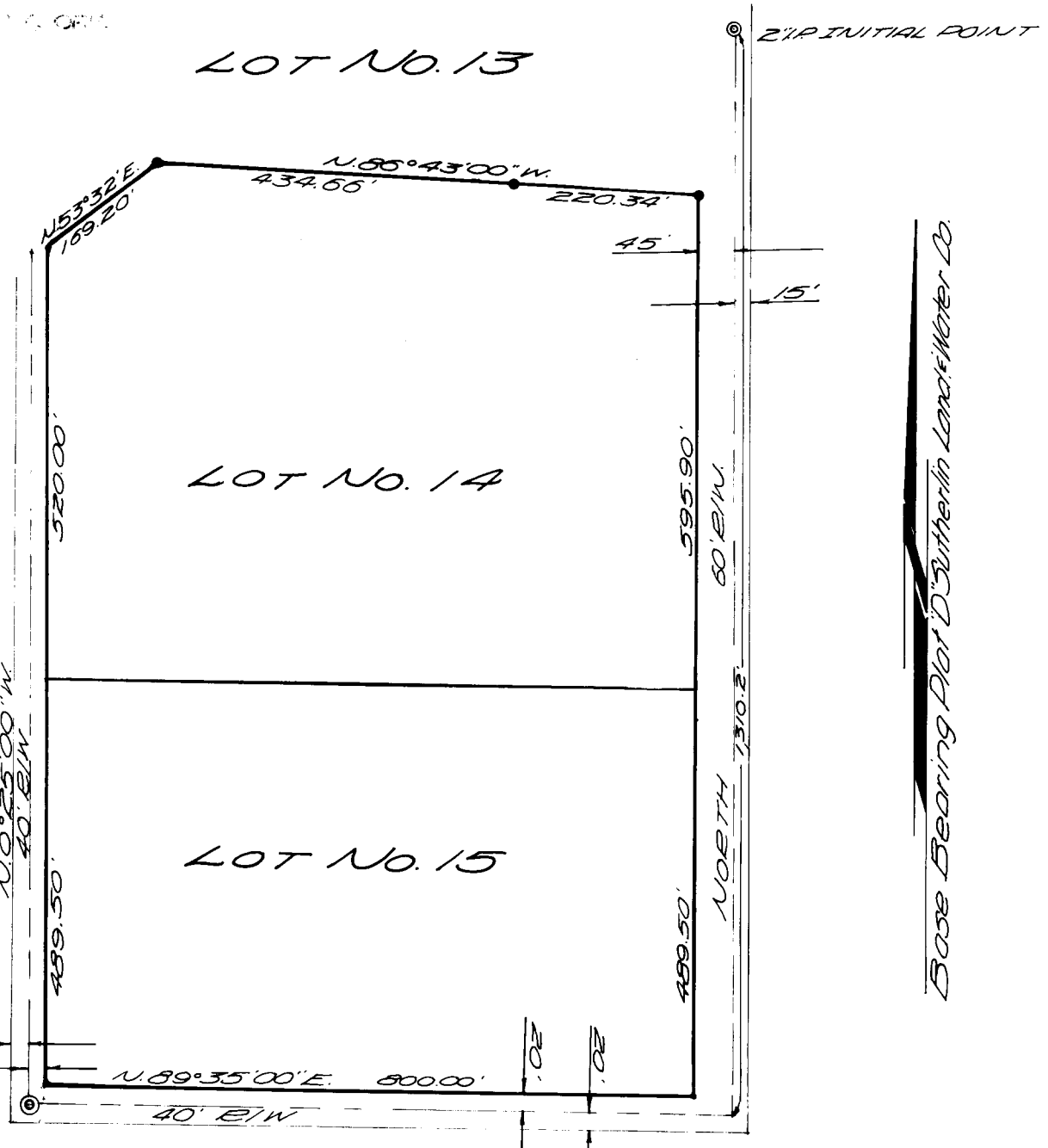
SCALE 1" = 200' *OCT. 27, 1967*

- SET 5/8" IRON ROD
- FOUND 2" IRON PIPE

REVISED 11/73
SEE C.S. 55/323



LL
JAN 5 1968



Base Bearing Plat D Sutherlin Land & Water Co.