

COUNTY SURVEYORS FILE DATA  
DO NOT REMOVE FROM OFFICE

SURVEY FOR

# WINCHESTER PLYWOOD COMPANY

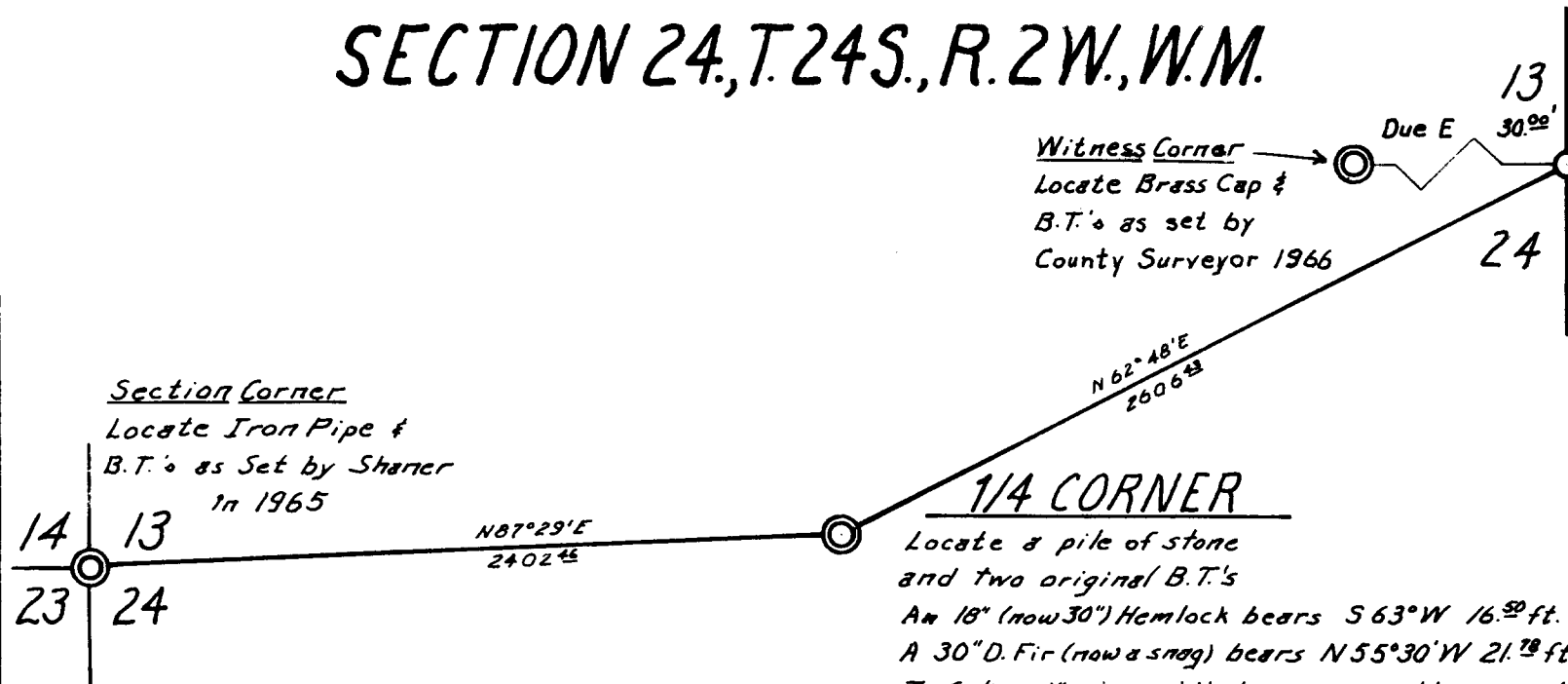
IN

## SECTION 24, T.24S., R.2W., W.M.

FILED  
RECEIVED

JUN 29 1968

COUNTY SURVEYOR  
DOUGLAS COUNTY, ORE.



Witness Corner  
Locate Brass Cap &  
B.T.'s as set by  
County Surveyor 1966

Section Corner  
Locate Iron Pipe &  
B.T.'s as Set by Shaner  
in 1965

1/4 CORNER  
Locate a pile of stone  
and two original B.T.'s  
An 18" (now 30") Hemlock bears S 63° W 16.50 ft.  
A 30" D. Fir (now a snag) bears N 55° 30' W 21.75 ft.  
I Set a 1" pipe with brass cap in the mound  
of stone and establish one new B.T.  
An 8" Hemlock bears N 25° E 8.5 feet  
Scribed "1/4 S S13BT".

Surveyed by Conifer Logging Company  
Date: June 1968  
Kern Theodolite and 200' Eng. Tape



NOTE: Bearings based on  
magnetic compass  
at N.W. Sec. Cor.



Scale: 1" = 600'