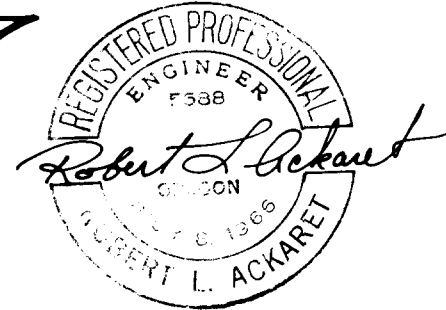
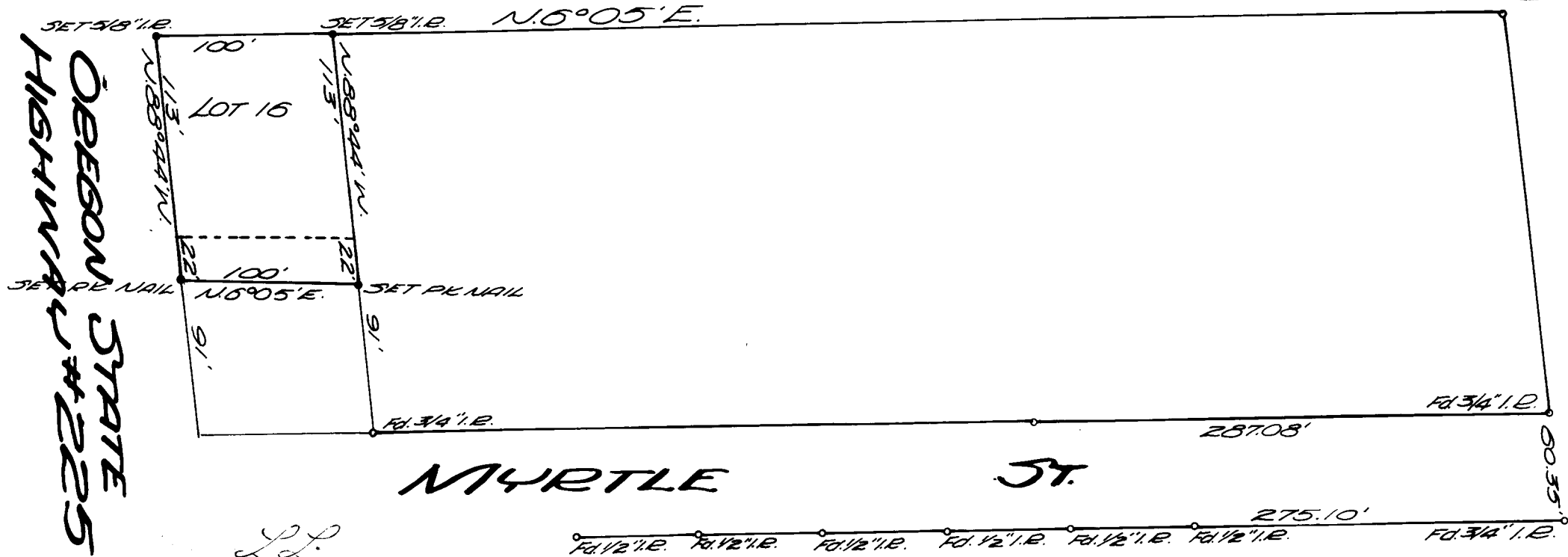


SURVEYED TO ESTABLISH PROPERTY FOR
LOT NO. 16 & PART OF LOT NO. 24, KEUSE TERRACE TRACTS
FOR UNION OIL COMPANY **OCT. 11, 1967**
BY BAUGHMAN & ACKARET INC.
SCALE 1"=80'

COUNTY CLERK'S OFFICE
DO NOT REMOVE FROM OFFICE



WESTWOOD STREET



OREGON STATE HIGHWAY #225

LL

COUNTY SURVEYORS FILE DATA
DO NOT REMOVE FROM OFFICE

T 25-5-19