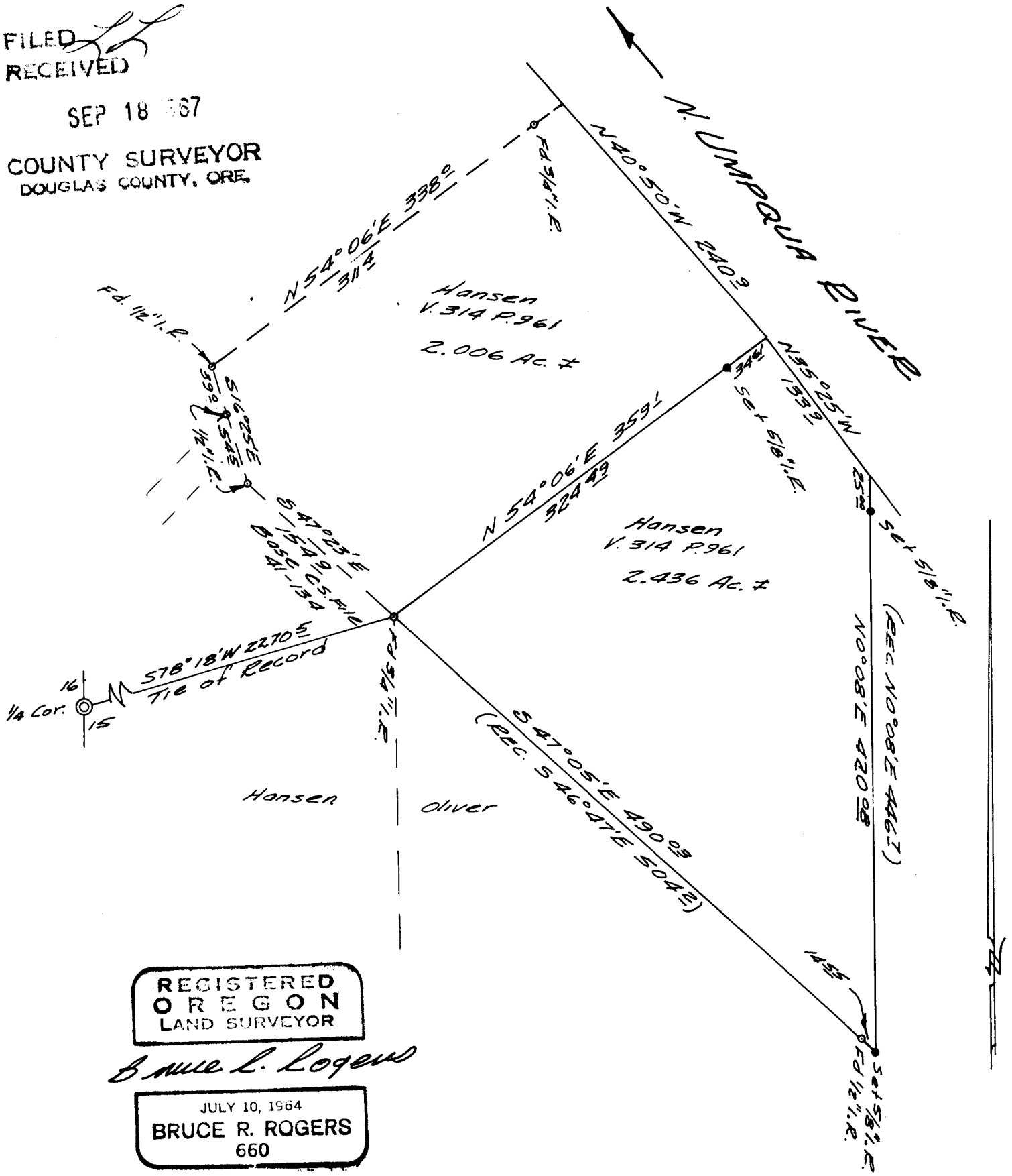


FILED  
RECEIVED

SEP 18 1967

COUNTY SURVEYOR  
DOUGLAS COUNTY, ORE.



REGISTERED  
OREGON  
LAND SURVEYOR

*Bruce L. Rogers*

JULY 10, 1964  
BRUCE R. ROGERS  
660

**DO NOT REMOVE FROM OFFICE**

**SURVEY TO SET PROPERTY CORNERS  
A METES & BOUNDS PARCEL IN SEC. 15, T. 26S., R. 4W. W.M.  
SURVEYED FOR GERALDINE HANSEN  
BY BRUCE ROGERS  
SEPT. 17, 1967  
1" = 100'**