

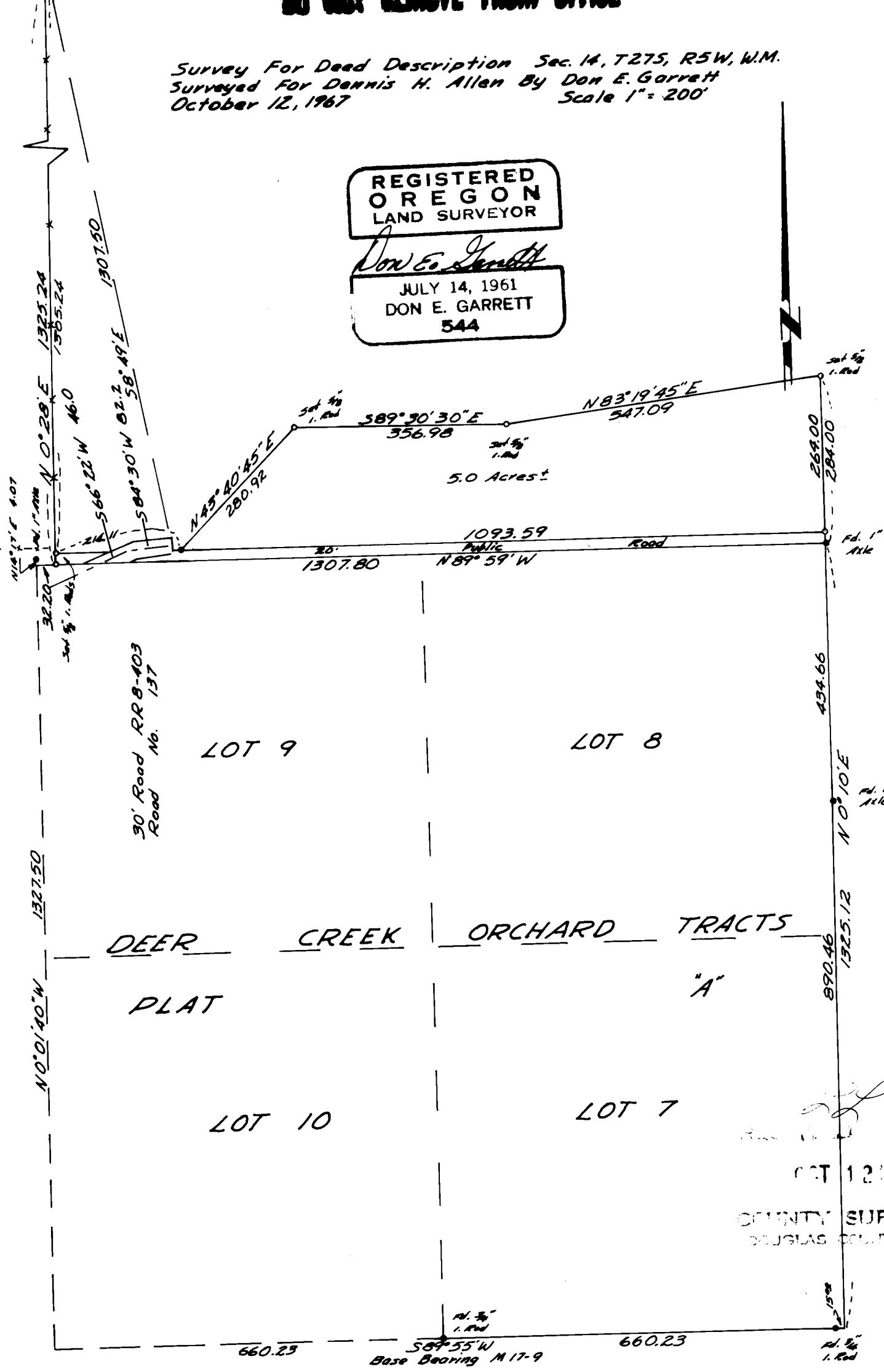
**COUNTY SURVEYORS FILE DATA  
DO NOT REMOVE FROM OFFICE**

Survey For Deed Description Sec. 14, T27S, R5W, W.M.  
Surveyed For Dennis H. Allen By Don E. Garrett  
October 12, 1967 Scale 1" = 200'

REGISTERED  
OREGON  
LAND SURVEYOR

*Don E. Garrett*  
JULY 14, 1961  
DON E. GARRETT  
544

15  
14  
14 Fd. Brass  
COR. CAP



OCT 12 1967  
COUNTY SURVEYOR  
DOUGLAS COUNTY, ORE.