

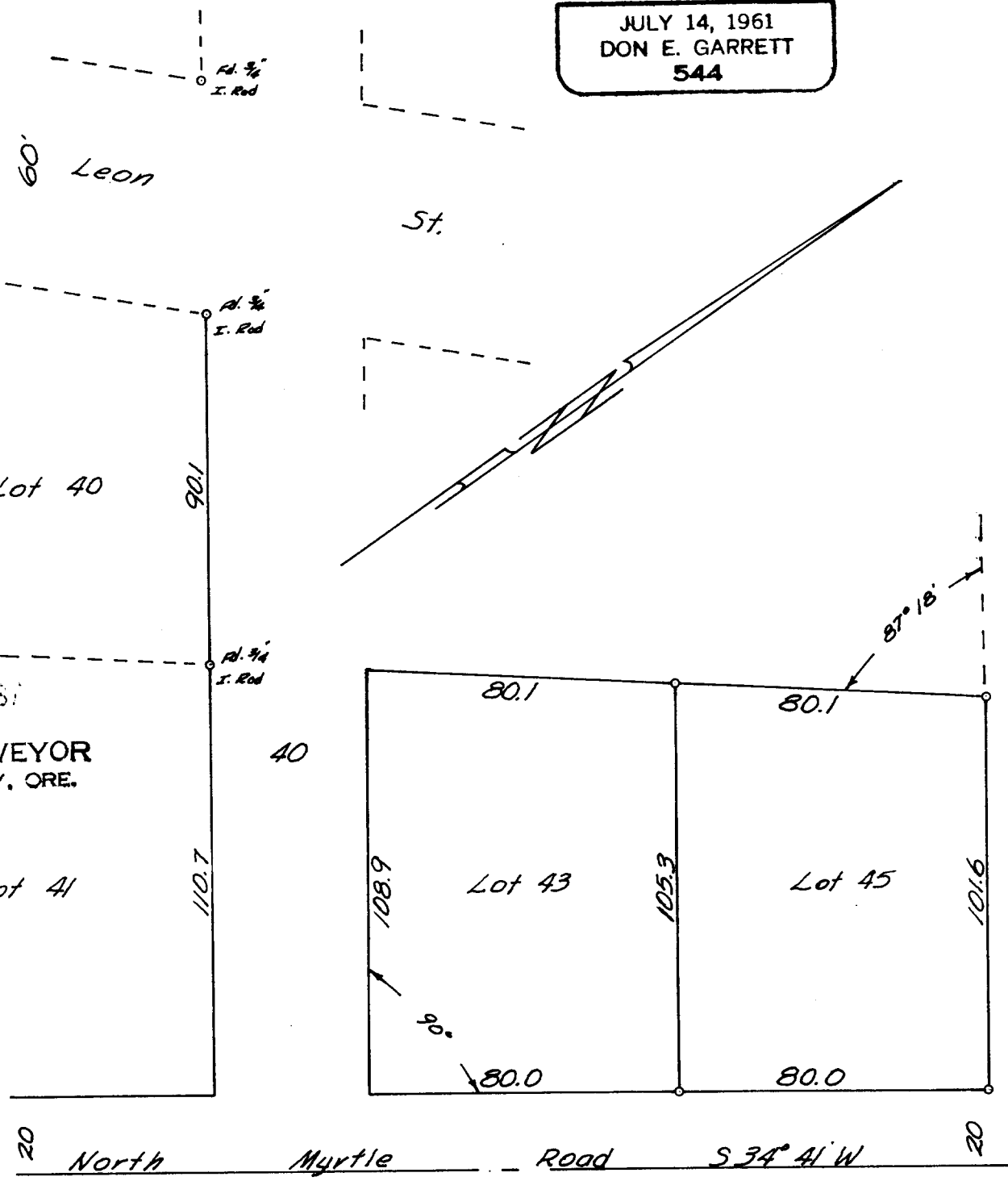
COUNTY SURVEYORS FILE DATA
DO NOT REMOVE FROM OFFICE

School Addition to The City of Myrtle Creek, Ore.
Sec. 22, T 29S, R 5W, W.M.
Surveyed for R.T. McKinnis
Surveyed by Don E. Garrett
July 1967
Scale 1" = 40'
Set 5/8" I. Rod

REGISTERED
 OREGON
 LAND SURVEYOR

Don E. Garrett

JULY 14, 1961
 DON E. GARRETT
 544



FILED
 RECEIVED
 JUL 28 1967
 COUNTY SURVEYOR
 DOUGLAS COUNTY, ORE.