

**SURVEYED FOR DEED DESCRIPTION**  
**LOCATED IN SEC. 15, T. 27 S., R. 6 W. W. M.**  
**FOR BERT YOUNG JULY 2, 1967**  
**BY BAUGHMAN & ACKARET INC.**  
**SCALE 1" = 40'**

**COUNTY SURVEYORS FILE DATA**  
**DO NOT REMOVE FROM OFFICE**

- SET 5/8" IRON ROD
- FOUND 1/2" IRON ROD

REGISTERED  
 OREGON  
 LAND SURVEYOR

*Glenn S. Baughman*

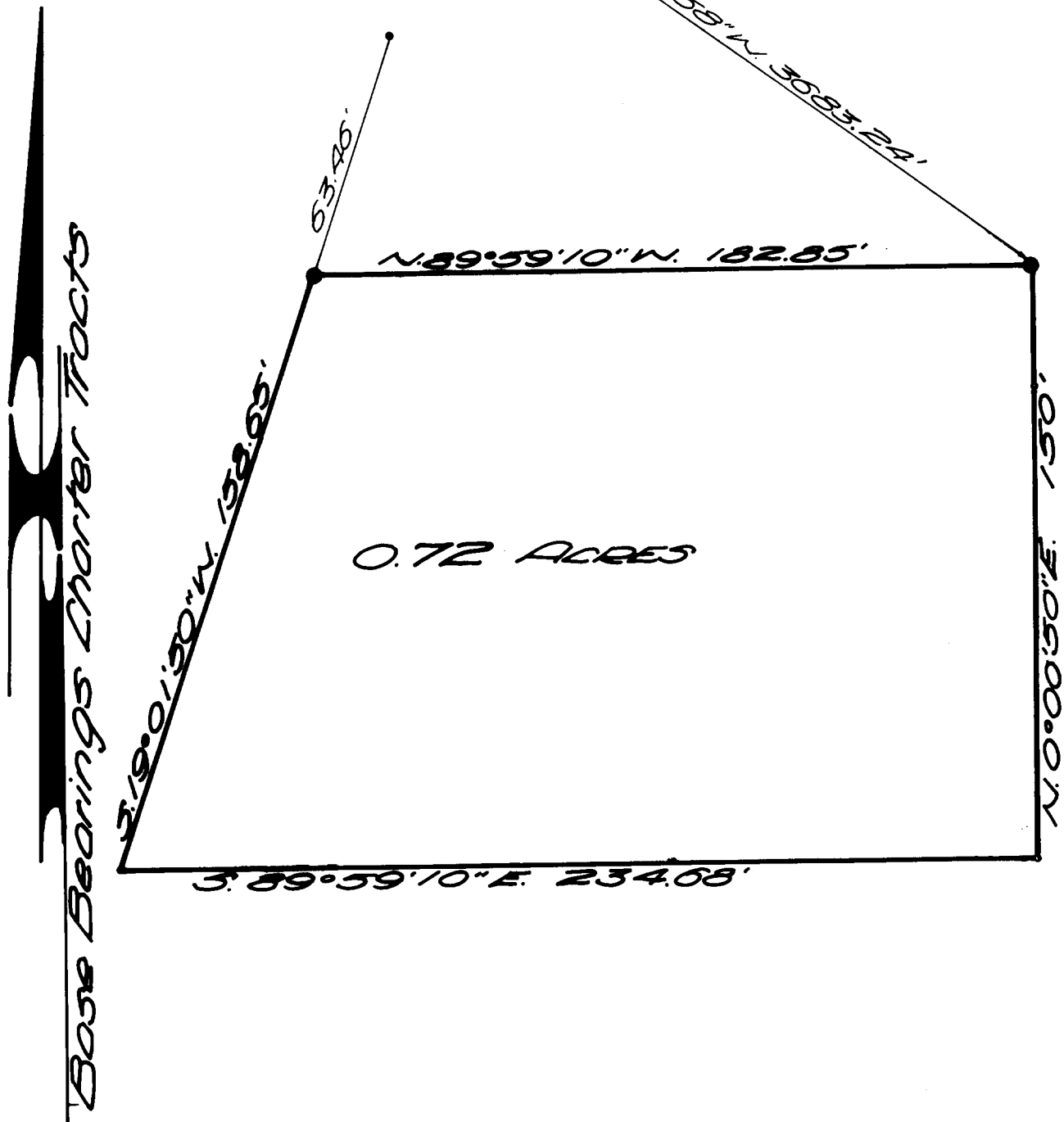
JULY 14, 1961  
 GLENN S. BAUGHMAN  
 536

FILED *LL*  
 RECEIVED

AUG 3 1967

COUNTY SURVEYOR  
 DOUGLAS COUNTY, ORE.

114 | 16  
 15 | 208



Base Bearings Charter Tracts