

RESTORATION OF OBLITERATED CORNER  
 SECTION 12, T33S, R7W, W.M.  
 June 23, 1967  
 Survey for The Robert Lollar Co.

FILED  
 RECEIVED

COUNTY SURVEYING FILE DATA  
 DO NOT REMOVE FROM OFFICE

JUL 14 1967

COUNTY SURVEYOR  
 DOUGLAS COUNTY, ORE.

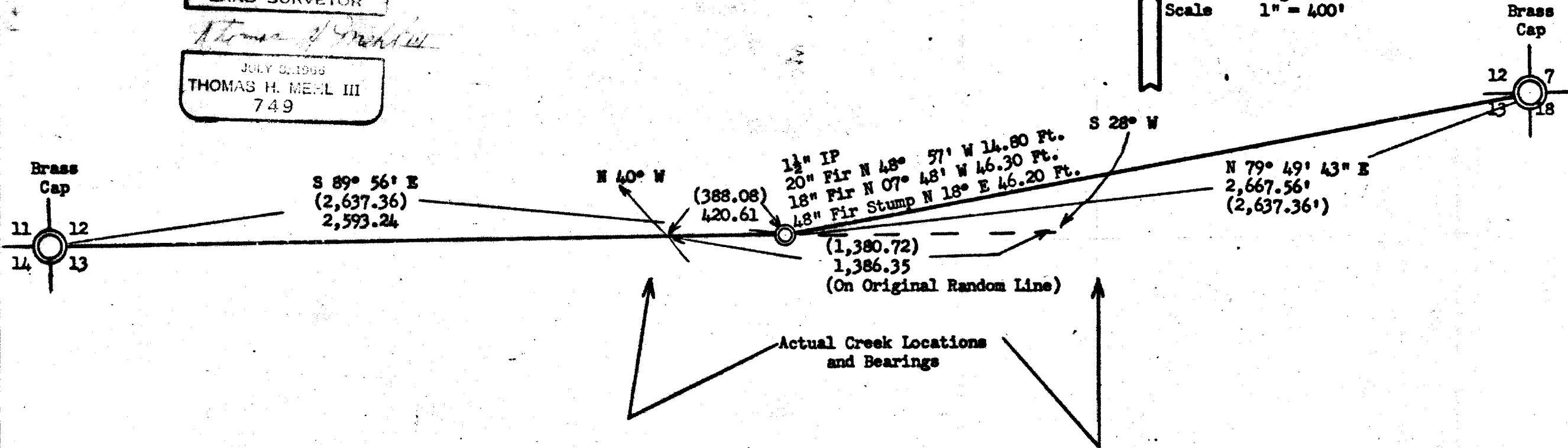
REGISTERED  
 OREGON  
 LAND SURVEYOR

*Thomas H. Mehl III*

JULY 21 1966  
 THOMAS H. MEHL III  
 749



Variation  $19\frac{1}{2}^{\circ}$  E  
 Scale 1" = 400'



( ) Original Called Distances  
 All True Lines Established

C.S. File No. 55/42A