

**COUNTY SURVEYORS FILE DATA
DO NOT REMOVE FROM OFFICE**

FILED *LL*
RECEIVED

JUL 6 1967

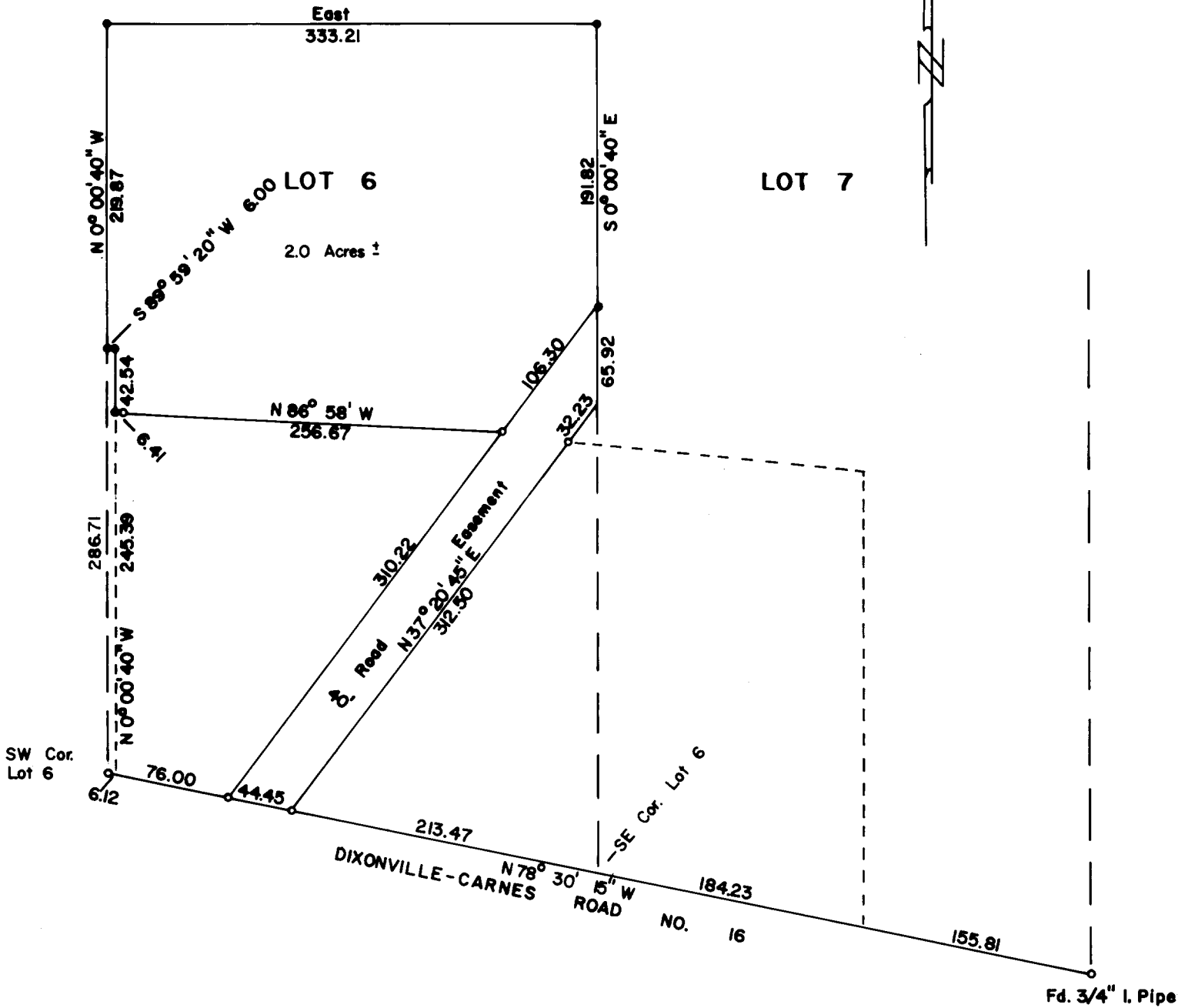
COUNTY SURVEYOR
DOUGLAS COUNTY, ORE.

SURVEY IN LOT 6 BLOCK 1 GLENGARY FRUIT LANDS

Surveyed for Duane Brown
Surveyed by Don E. Garrett
June 1967
Scale 1" = 100'
• - Set 5/8" Iron Rod
○ - Fd. 5/8" Iron Rod

Note: Bearings are based on the North Line of Road No. 16. CS File 51/290

**REGISTERED
OREGON
LAND SURVEYOR**
Don E. Garrett
**JULY 14, 1961
DON E. GARRETT
544**



T. 28-6-13

CS File No. 55/40-3