

COUNTY SURVEYORS FILE DATA  
DO NOT REMOVE FROM OFFICE

FILED  
RECEIVED

JUL 19 1967

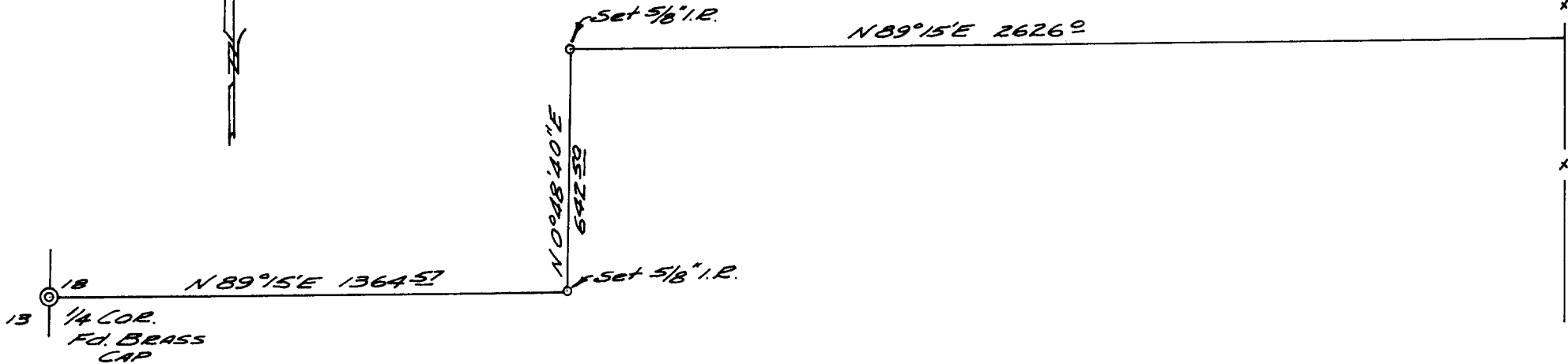
COUNTY SURVEYOR  
DOUGLAS COUNTY, ORE.

SURVEY OF AGREEMENT LINE  
SURVEYED FOR BILL HILLMAN by DON E. GARRETT  
IN SEC. 18, T.25S., R. 6W.W.M.  
JUNE, 1967  
1" = 400'

REGISTERED  
OREGON  
LAND SURVEYOR

*Don E. Garrett*

JULY 14, 1961  
DON E. GARRETT  
544



BEARINGS & PROPORTIONING ARE  
BASED ON C.S. FILE M. 31-44